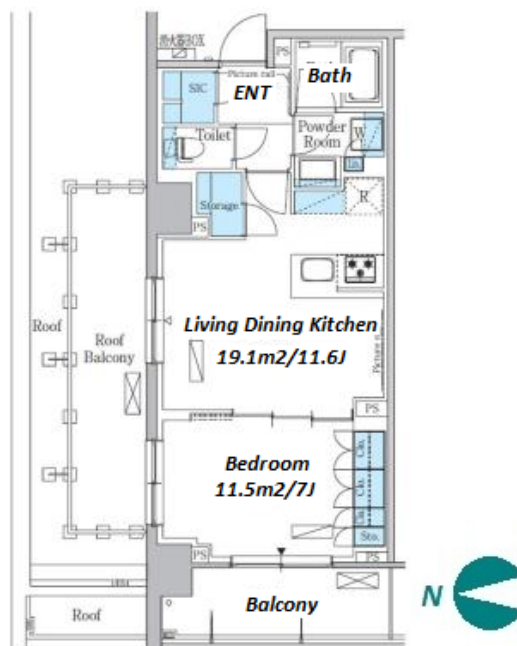


Property Name	PARK AXIS IKEDAYAMA	Unit No.	TYPE	Access	Gotanda Station on Toei Asakusa Line (3 min) Gotanda Station on JR Yamanote Line (5 min)
		525	Apt.		
Address	4-10-22, Higashigotanda, Shinagawa-Ku, Tokyo				

## Stylish Apartment in Gotanda, near Meguro / Ebisu



Lease Conditions			
LAYOUT	1 BR		
SIZE	47.01 m²/506.01 ft²		
RENT	JPY 254,000 / month		
Management Fee	-		
Deposit	2 months	Key Money	1 month
Lease Term	Standard lease for 24 months		
Available	End, Sep, 2024		
Renewal Fee	1 month		
Agent Fee	1 month + tax		
Other Info	Key Replacement Fee : JPY20,000 Tax not included / Guarantor Company : TBC / Auto lock / Air-Con / Separated Toilet / Balcony / Internet Included / Musical Instrument Negotiable / Roof Balcony / Flooring / Bathroom dryer		

Building Information			
Completion	Mar, 2015	Earthquake Resistance	New
Structure	RC, 12 floors above		
Car Parking	JPY44,000 + tax / month		
Bicycle Parking	for 1 space ( Included )		
Music Instrument	Negotiable	Pet	Allowed
Facilities	Motorcycle Parking (JPY5,000 ~ 8,000 + tax / month) / Gym (( Included )) / Near Large Parks / Front desk / Delivery box / Elevator		

Remarks
Renters Insurance : Required / Pet:additional deposit ( 1 month ) / Pet : a small dog or a cat

\*The actual Layout & Size may differ slightly from this floor plans & pictures.



# HOUSEREP TOKYO INC.

ハウスレップトーキョー株式会社

#301, 1-4-15, Hiroo, Shibuya-ku, Tokyo 150-0012, Japan

+81 (0)3 6427 5860

inquiry@housserrep-tokyo.com

Transaction Type : Intermediate

Agent Fee : 1 month + tax

Website : www.housserrep-tokyo.com

