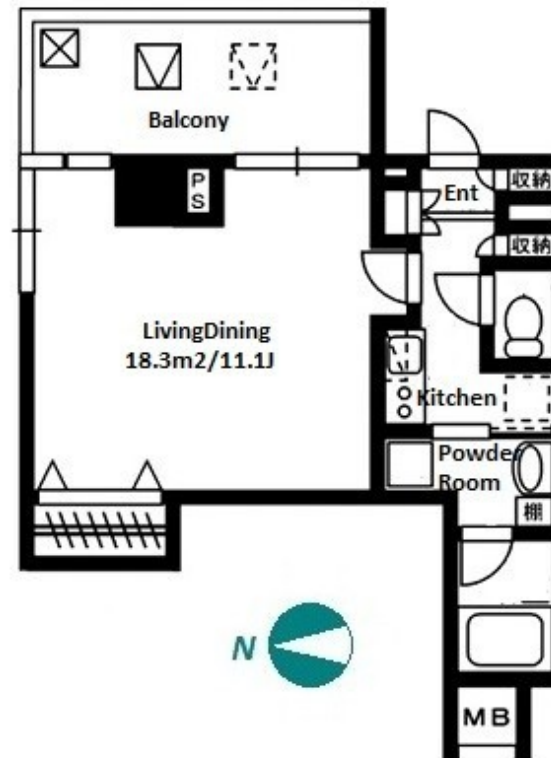


Property Name	RESIDIA YOTSUYA SANCHOME	Unit No.	TYPE	Access	Akebonobashi Station on Toei Shinjuku Line (2 min) Yotsuyasannchoume Station on Marunouchi Line (7 min)
		209	Apt.		
Address	17-1, Arakicho, Shinjuku-Ku, Tokyo				

Modern mid-rise Apt. in Shinjuku Arakicho



Lease Conditions		
LAYOUT	Studio	
SIZE	33.16 m²/356.93 ft²	
RENT	JPY 140,000 / month	
Management Fee	JPY10,000/month	
Deposit	2 months	Key Money -
Lease Term	Standard lease for 24 months	
Available	Mid, Jun, 2024	
Renewal Fee	1 month	
Agent Fee	1 month + tax	
Other Info	Key Replacement Fee : JPY18,000 Tax not included / Guarantor Company : TBC / No Key Money / Auto lock / Air-Con / Separated Toilet / Balcony / Penalty Fee for Early Cancellation / Flooring / Bathroom dryer	

Building Information			
Completion	May, 2009	Earthquake Resistance	New
Structure	RC, 10 floors above		
Car Parking	JPY38,500 ~ 44,000 + tax / month		
Bicycle Parking	for 1 space ( Included )		
Music Instrument	-	Pet	N/A
Facilities	Motorcycle Parking (JPY3,300 + tax / month) / Near Large Parks / Delivery box / Elevator		

Remarks
Tenant support fee: JPY.10,000+tax

\*The actual Layout & Size may differ slightly from this floor plans & pictures.



HOUSEREP TOKYO INC.

ハウスレップトキョー株式会社

#301, 1-4-15, Hiroo, Shibuya-ku, Tokyo 150-0012, Japan

+81 (0)3 6427 5860

inquiry@housserep-tokyo.com

Transaction Type : Intermediate

Agent Fee : 1 month + tax

Website : www.housserep-tokyo.com

