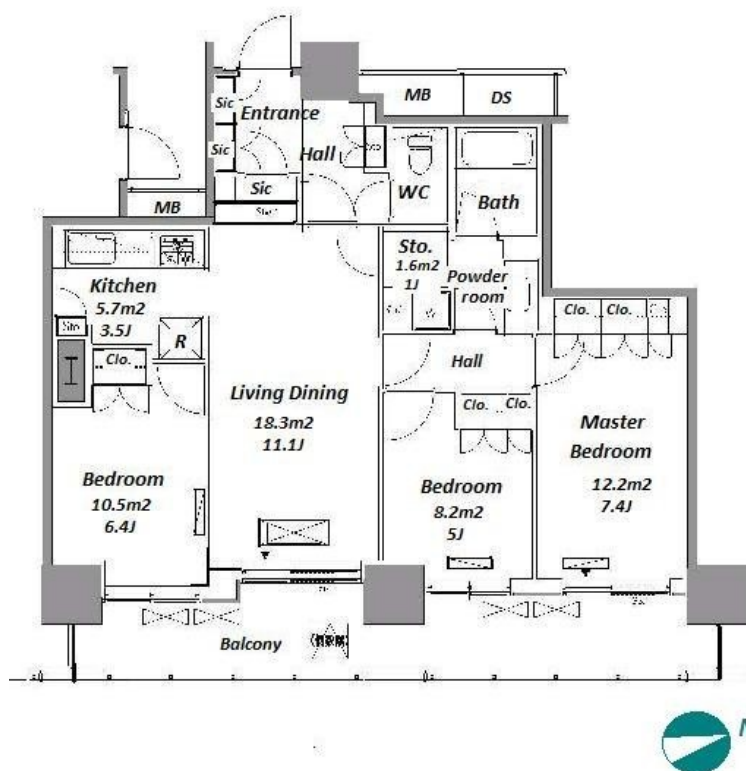
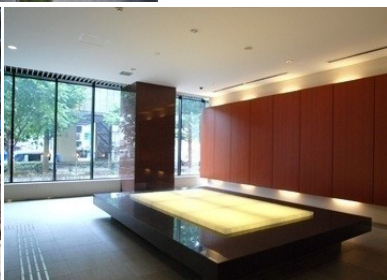


Property Name	RESIDIA TOWER MEGURO FUDOMAE	Unit No.	TYPE	Access	Gotanda Station on JR Yamanote Line (7 min) Fudoumae Station on Tokyu Meguro Line (8 min) Meguro Station on Mita Line (14 min)
	Address	3-7-6, Nishigotanda, Shinagawa-Ku, Tokyo	908		

## Stylish High Rise Apt. in Meguro / Gotanda, near Meguro River



Lease Conditions	
LAYOUT	3 BR
SIZE	78.46 m <sup>2</sup> /844.53 ft <sup>2</sup>
RENT	JPY 405,000 / month
Management Fee	JPY 15,000/month
Deposit	2 months
Key Money	-
Lease Term	Standard lease for 24 months
Available	Now
Renewal Fee	1 month
Agent Fee	1 month + tax
Other Info	Key Replacement Fee : JPY20,000 Tax not included / Guarantor Company : TBC / No Key Money / Auto lock / Renovated / Air-Con / Separated Toilet / Balcony / Internet (Extra Charge) / Penalty Fee for Early Cancellation / Musical Instrument Negotiable / Flooring / Bathroom dryer

Building Information			
Completion	Jan, 2007	Earthquake Resistance	New
Structure	RC, 30 floors above		
Car Parking	TBC		
Bicycle Parking	TBC		
Music Instrument	Negotiable	Pet	Negotiable
Facilities	Motorcycle Parking (TBC) / Trunk Room (TBC) / Gym (( Included )) / Front desk / Janitor / Delivery box / Elevator / Sky lounge / Security / High-rise		

\*The actual Layout &amp; Size may differ slightly from this floor plans &amp; pictures.



HOUSEREP TOKYO INC.

ハウスレップトーキョー株式会社

#301, 1-4-15, Hiroo, Shibuya-ku, Tokyo 150-0012, Japan

+81 (0)3 6427 5860

inquiry@housserep-tokyo.com

Transaction Type : Intermediate

Agent Fee : 1 month + tax

Website : www.housserep-tokyo.com



Remarks
Renters Insurance : Required / Tenant support fee: JPY.10,000+tax/2years Internet fee: JPY.1,500+tax/month