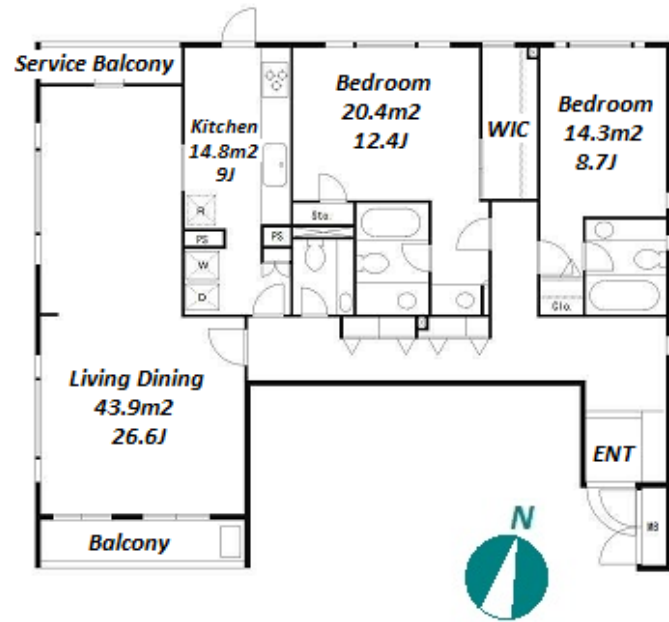


Property Name	K6 COURT	Unit No.	TYPE	Access	Nogizaka Station on Chiyoda Line (5 min) Aoyamaicchoume Station on Ginza Line (7 min)
		201	Apt.		
Address	8-11-1, Akasaka, Minato-Ku, Tokyo				

## Cozy Low Rise & Spacious Apartment in Akasaka / Aoyama Area



Lease Conditions	
LAYOUT	2 BR
SIZE	139.65 m <sup>2</sup> /1503.18 ft <sup>2</sup>
RENT	JPY 625,000 / month
Management Fee	JPY30,000/month
Deposit	2 months
Key Money	1 month
Lease Term	Standard lease for 24 months
Available	End, Aug, 2024
Renewal Fee	1 month
Agent Fee	1 month + tax
Other Info	Key Replacement Fee : JPY20,000 Tax not included / Guarantor Company : TBC / Auto lock / Fridge / Air-Con / Separated Toilet / Balcony / Flooring / Washer / Dryer / Dishwasher / Oven

Building Information	
Completion	Nov, 1993
Earthquake Resistance	New
Structure	RC, 4 floors above
Car Parking	for 1 space ( Included )
Bicycle Parking	N/A
Music Instrument	-
Pet	-
Facilities	Motorcycle Parking (TBC) / Trunk Room (( Included ))

Remarks
Renters Insurance : Required

\*The actual Layout & Size may differ slightly from this floor plans & pictures.



# HOUSEREP TOKYO INC.

ハウスレップトーキョー株式会社

#301, 1-4-15, Hiroo, Shibuya-ku, Tokyo 150-0012, Japan

+81 (0)3 6427 5860

inquiry@housserrep-tokyo.com

Transaction Type : Intermediate

Agent Fee : 1 month + tax

Website : www.housserrep-tokyo.com

