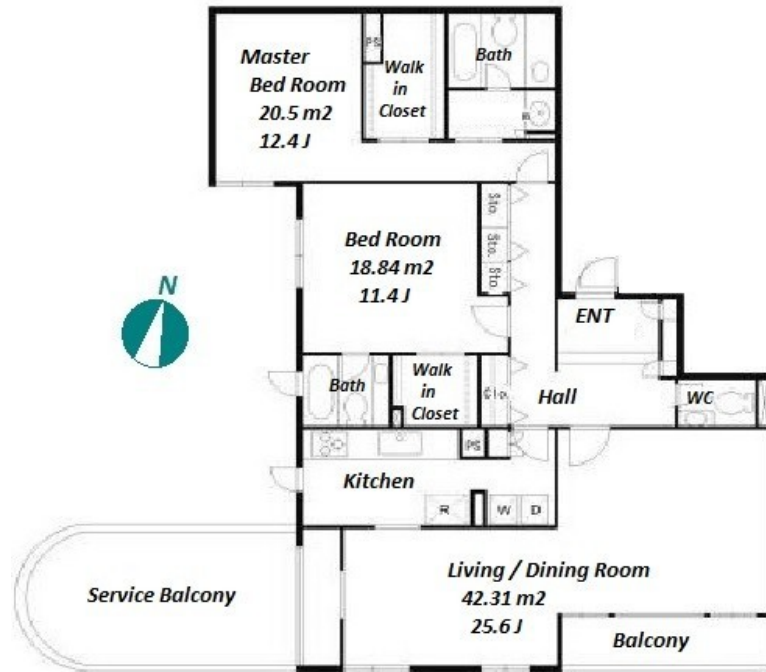
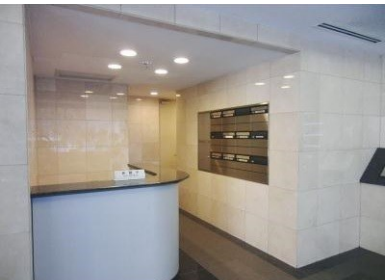


Property Name	K6 COURT	Unit No.	TYPE	Access	Nogizaka Station on Chiyoda Line (5 min) Aoyamaicchoume Station on Ginza Line (7 min)
		202	Apt.		
Address	8-11-1, Akasaka, Minato-Ku, Tokyo				

## Cozy Low Rise & Spacious Apartment in Akasaka / Aoyama Area



Lease Conditions			
LAYOUT	2 BR		
SIZE	140.33 m <sup>2</sup> /1510.49 ft <sup>2</sup>		
RENT	JPY 630,000 / month		
Management Fee	JPY30,000/month		
Deposit	2 months	Key Money	1 month
Lease Term	Ask for Details for months		
Available	End, Aug, 2024		
Renewal Fee	1 month		
Agent Fee	1 month + tax		
Other Info	Key Replacement Fee : JPY20,000 Tax not included / Guarantor Company : TBC / Auto lock / Fridge / Air-Con / Balcony / Washer / Dryer / Dishwasher / Oven		

Building Information			
Completion	Nov, 1993	Earthquake Resistance	New
Structure	RC, 4 floors above		
Car Parking	TBC		
Bicycle Parking	N/A		
Music Instrument	-	Pet	-
Facilities	Motorcycle Parking (TBC)		

Remarks
Renters Insurance : TBC

\*The actual Layout & Size may differ slightly from this floor plans & pictures.



# HOUSEREP TOKYO INC.

ハウスレップトーキョー株式会社

#301, 1-4-15, Hiroo, Shibuya-ku, Tokyo 150-0012, Japan

+81 (0)3 6427 5860

inquiry@housserrep-tokyo.com

Transaction Type : Intermediate

Agent Fee : 1 month + tax

Website : www.housserrep-tokyo.com

