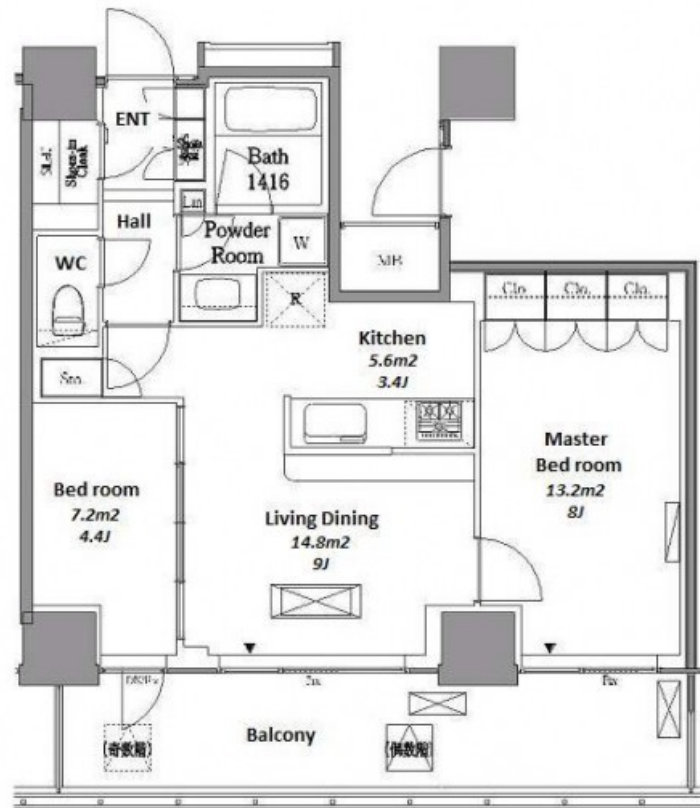
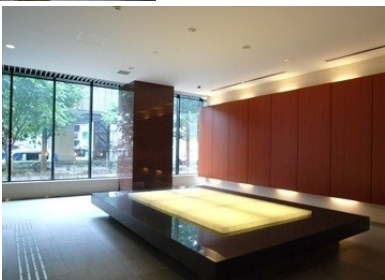


Property Name	RESIDIA TOWER MEGURO	Unit No.	TYPE	Access	Gotanda Station on JR Yamanote Line (7 min) Fudoumae Station on Tokyu Meguro Line (8 min) Meguro Station on Mita Line (14 min)
	FUDOMAE	2012	Apt.		
Address	3-7-6, Nishigotanda, Shinagawa-Ku, Tokyo				

## Stylish High Rise Apt. in Meguro / Gotanda, near Meguro River



Lease Conditions		
LAYOUT	1 BR+S	
SIZE	55.63 m <sup>2</sup> /598.79 ft <sup>2</sup>	
RENT	JPY 277,000 / month	
Management Fee	JPY 15,000/month	
Deposit	2 months	Key Money 1 month
Lease Term	Standard lease for 24 months	
Available	Negotiable	
Renewal Fee	1 month	
Agent Fee	1 month + tax	
Other Info	Key Replacement Fee : JPY20,000 Tax not included / Guarantor Company : TBC / Auto lock / Renovated / Air-Con / Separated Toilet / Balcony / Internet (Extra Charge) / Penalty Fee for Early Cancellation / Musical Instrument Negotiable / Flooring / Bathroom dryer	

Building Information		
Completion	Jan, 2007	Earthquake Resistance New
Structure	RC, 30 floors above	
Car Parking	TBC	
Bicycle Parking	TBC	
Music Instrument	Negotiable	Pet Negotiable
Facilities	Motorcycle Parking (TBC) / Trunk Room (TBC) / Gym (( Included )) / Front desk / Janitor / Delivery box / Elevator / Sky lounge / Security / High-rise	

Remarks
Tenant support fee: JPY.10,000+tax/2years Internet fee: JPY.1,500+tax/month

\*The actual Layout & Size may differ slightly from this floor plans & pictures.



HOUSEREP TOKYO INC.

ハウスレップトーキョー株式会社

#301, 1-4-15, Hiroo, Shibuya-ku, Tokyo 150-0012, Japan

+81 (0)3 6427 5860

inquiry@housserep-tokyo.com

Transaction Type : Intermediate

Agent Fee : 1 month + tax

Website : www.housserep-tokyo.com

