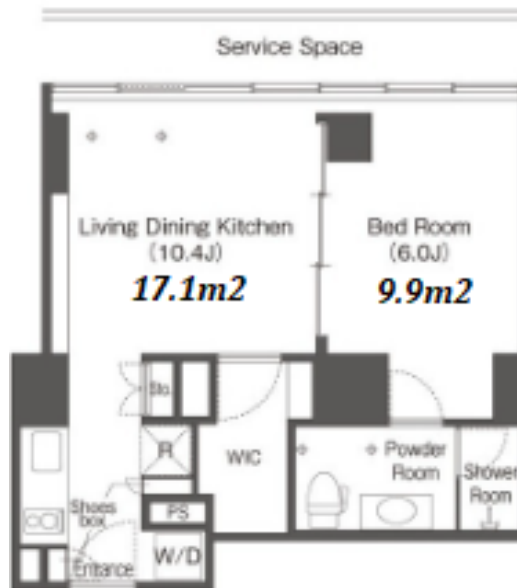


Property Name	WELLITH URBAN SHINAGAWA TOWER	Unit No.	TYPE	Access	Shinagawa Station on JR Yamanote Line (9 min) Shinagawa Station on JR Keihin Tohoku Line (9 min)
		2307	Apt.		
Address	4-1-6, Konan, Minato-Ku, Tokyo				

Modern Apt. in Shinagawa, Great View of Tokyo Bay



Lease Conditions		
LAYOUT	1 BR	
SIZE	40.07 m ² /431.3 ft ²	
RENT	JPY 215,000 / month	
Management Fee	JPY12,000/month	
Deposit	2 months	Key Money -
Lease Term	Fixed term lease for 36 months	
Available	Mid, Nov, 2024	
Renewal Fee	-	
Agent Fee	1 month + tax	
Other Info	Key Replacement Fee : JPY20,000 Tax not included / Guarantor Company : TBC / No Key Money / Auto lock / Fridge / Air-Con / Internet Included / Penalty Fee for Early Cancellation / Flooring / IH Stoves / Dishwasher / Bathroom dryer / WIC	

Building Information			
Completion	Nov, 2003	Earthquake Resistance	New
Structure	SRC, 24 floors above and 1 basement floors		
Car Parking	TBC		
Bicycle Parking	(Included)		
Music Instrument	-	Pet	N/A
Facilities	Motorcycle Parking (TBC) / Gym ((Included)) / Within 20 min to Tokyo station by car / Near Large Parks / Front desk / Concierge / Delivery box / Elevator / Sky lounge		

*The actual Layout & Size may differ slightly from this floor plans & pictures.



HOUSEREP TOKYO INC.

ハウスレップトーキョー株式会社

#301, 1-4-15, Hiroo, Shibuya-ku, Tokyo 150-0012, Japan

+81 (0)3 6427 5860 inquiry@housserep-tokyo.com

Transaction Type : Intermediate

Agent Fee : 1 month + tax

Website : www.housserep-tokyo.com



Remarks
Fixed term lease : Re-contract fee: 1 month of new rent / Hot water supply: JPY.25,000+tax/month