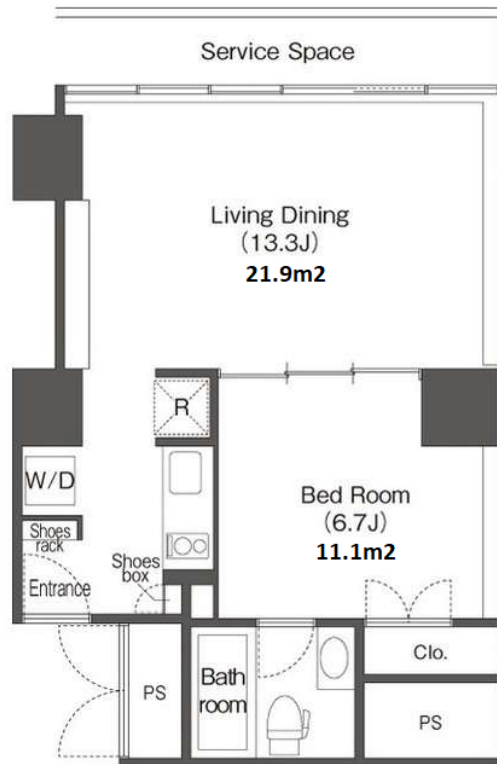


Property Name	WELLITH URBAN SHINAGAWA TOWER	Unit No.	TYPE	Access	Shinagawa Station on JR Yamanote Line (9 min) Shinagawa Station on JR Keihin Tohoku Line (9 min)
		1514	Apt.		
Address	4-1-6, Konan, Minato-Ku, Tokyo				

Modern Apt. in Shinagawa, Great View of Tokyo Bay



*Cannot use Service Space

Lease Conditions	
LAYOUT	1 BR
SIZE	43.14 m ² /464.35 ft ²
RENT	JPY 237,000 / month
Management Fee	JPY12,000/month
Deposit	2 months
Key Money	-
Lease Term	Fixed term lease for 36 months
Available	Mid, Jan, 2025
Renewal Fee	-
Agent Fee	1 month + tax
Other Info	Guarantor Company : TBC / Auto lock / Air-Con / Internet Included / Penalty Fee for Early Cancellation / Flooring / IH Stoves / Bathroom dryer

Building Information	
Completion	Nov, 2003
Earthquake Resistance	New
Structure	SRC, 24 floors above and 1 basement floors
Car Parking	TBC
Bicycle Parking	(Included)
Music Instrument	-
Pet	N/A
Facilities	Motorcycle Parking (TBC) / Gym ((Included)) / Within 20 min to Tokyo station by car / Near Large Parks / Front desk / Concierge / Delivery box / Elevator / Sky lounge

Remarks
Fixed term lease : Re-contract fee: 1 month of new rent / Renters Insurance : Required / Hot water supply: JPY.25,000+tax/month

*The actual Layout & Size may differ slightly from this floor plans & pictures.



HOUSEREP TOKYO INC.

ハウスレップトーキョー株式会社

#301, 1-4-15, Hiroo, Shibuya-ku, Tokyo 150-0012, Japan

+81 (0)3 6427 5860

inquiry@housserep-tokyo.com

Transaction Type : Intermediate

Agent Fee : 1 month + tax

Website : www.housserep-tokyo.com

