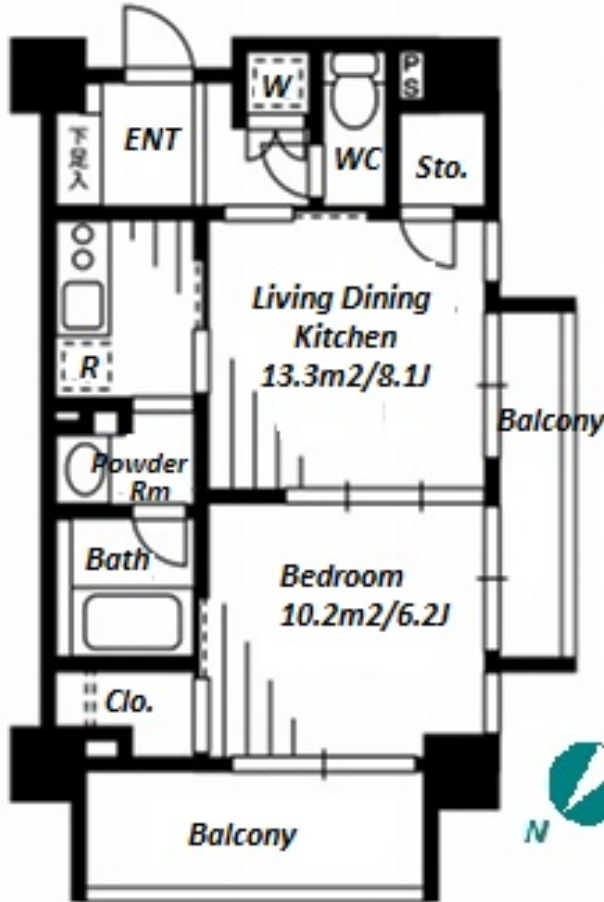


Property Name	RESIDIA IKEJIRI OHASHI	Unit No.	TYPE	Access	Ikejirioohashi Station on Denentoshi Line (7 min) Sannennjaya Station on Denentoshi Line (11 min) Sannennjaya Station on Tokyu Setagaya Line (11 min)
		1303	Apt.		
Address	3-24-20, Ikejiri, Setagaya-Ku, Tokyo				

Cozy Mid Rise Apt. in Ikejiri, near "Sangenjaya" stn.



*The actual Layout & Size may differ slightly from this floor plans & pictures.

Lease Conditions	
LAYOUT	1 BR
SIZE	40.01 m²/430.66 ft²
RENT	JPY 172,000 / month
Management Fee	JPY15,000/month
Deposit	2 months
Key Money	1 month
Lease Term	Standard lease for 24 months
Available	Early, Dec, 2024
Renewal Fee	1 month
Agent Fee	1 month + tax
Other Info	Key Replacement Fee : JPY18,000 Tax not included / Guarantor Company : TBC / Auto lock / Air-Con / Separated Toilet / Balcony / Internet (Extra Charge) / Penalty Fee for Early Cancellation / CS/CATV / Flooring / IH Stoves / Bathroom dryer

Building Information			
Completion	Sep, 2005	Earthquake Resistance	New
Structure	RC, 15 floors above		
Car Parking	-		
Bicycle Parking	(Included)		
Music Instrument	-	Pet	N/A
Facilities	Delivery box / Elevator / High-rise		

Remarks
Renters Insurance : Required / Tenant support fee: 10,000+tax/2years Internet fee: JPY.1,500+tax/month / Bicycle parking : Registration fee: JPY.3,000+tax



HOUSEREP TOKYO INC.

ハウスレップトーキョー株式会社

#301, 1-4-15, Hiroo, Shibuya-ku, Tokyo 150-0012, Japan

+81 (0)3 6427 5860

inquiry@housserrep-tokyo.com

Transaction Type : Intermediate

Agent Fee : 1 month + tax

Website : www.housserrep-tokyo.com

