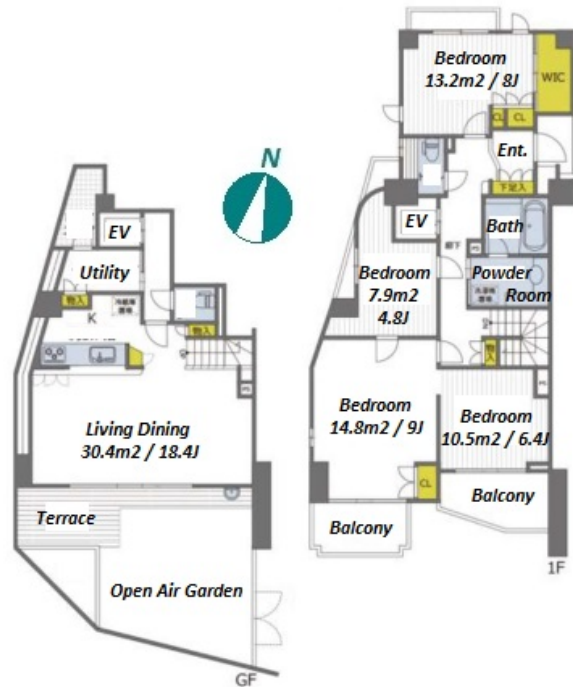


Property Name	HIGH VALLEY HIMONYA	Unit No.	TYPE	Access	Toritsudaigaku Station on Toyoko Line (11 min)
		101	Apt.		
Address	4-22-3, Himonya, Meguro-Ku, Tokyo				

Luxury Low-Rise Condo, Quiet Residential Area



Lease Conditions			
LAYOUT	4 BR		
SIZE	134.32 m²/1445.8 ft²		
RENT	JPY 500,000 / month		
Management Fee	-		
Deposit	1 month	Key Money	2 months
Lease Term	Standard lease for 24 months		
Available	Negotiable		
Renewal Fee	1 month		
Agent Fee	1 month + tax		
Other Info	Auto lock / Air-Con / Separated Toilet / Balcony / Loft/Maisonnette / Internet (Extra Charge) / Floor Heating / Dishwasher / Bathroom dryer / WIC		

Building Information			
Completion	Feb, 2002	Earthquake Resistance	New
Structure	RC, 3 floors above		
Car Parking	extra charge		
Bicycle Parking	extra charge		
Music Instrument	-	Pet	-
Facilities	Trunk Room (extra charge) / Janitor / Delivery box / Elevator / Security / 24h Garbage Drop-off / Low-rise		

Remarks
Renters Insurance : Required / Storage room : Full

*The actual Layout & Size may differ slightly from this floor plans & pictures.



HOUSEREP TOKYO INC.

ハウスレップトキョー株式会社

#301, 1-4-15, Hiroo, Shibuya-ku, Tokyo 150-0012, Japan

+81 (0)3 6427 5860 inquiry@housserrep-tokyo.com

Transaction Type : Intermediate

Agent Fee : 1 month + tax

Website : www.housserrep-tokyo.com

