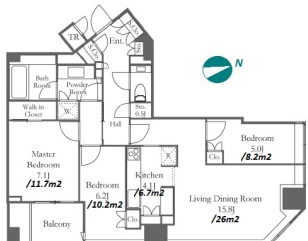
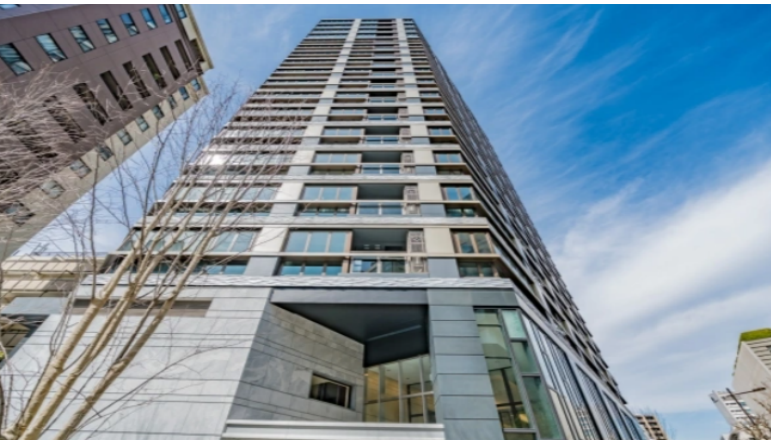


Property Name	BRILLIA ICHIBANCHO	Unit No.	TYPE	Access	Hanzoumonn Station on Hanzomon Line (3 min) Ichigaya Station on JR Chuo Line Rapid Service (8 min) Koujimachi Station on Yurakucho Line (9 min)
		304	Apt.		
Address	20-5, Ichibancho, Chiyoda-Ku, Tokyo				

## New & High Quality Apt. in Hanzomon, near the Imperial Palace



Lease Conditions			
LAYOUT	3 BR		
SIZE	91.21 m²/981.77 ft²		
RENT	JPY 700,000 / month		
Management Fee	-		
Deposit	2 months	Key Money	1 month
Lease Term	Fixed term lease for 36 months		
Available	Now		
Renewal Fee	-		
Agent Fee	1 month + tax		
Other Info	Guarantor Company : TBC / Auto lock / Air-Con / Separated Toilet / Balcony / Flooring / Floor Heating / Dishwasher / Bathroom dryer / WIC / Corner Unit		

Building Information			
Completion	Sep, 2019	Earthquake Resistance	New
Structure	RC, 18 floors above and 1 basement floors		
Car Parking	N/A		
Bicycle Parking	TBC		
Music Instrument	-	Pet	Negotiable
Facilities	Motorcycle Parking (TBC) / Trunk Room (( Included )) / Within 20 min to Roppongi by train / Within 20 min to Tokyo station by car / Near Large Parks / Front desk / Concierge / Janitor / Delivery box / Elevator / Security / Close to Station / High-rise / Newly-built (~7 y/o)		

Remarks
Renters Insurance : Required



# HOUSEREP TOKYO INC.

ハウズレップトーキョー株式会社

#301, 1-4-15, Hiroo, Shibuya-ku, Tokyo 150-0012, Japan

+81 (0)3 6427 5860

inquiry@housserrep-tokyo.com

Transaction Type : Intermediate

Agent Fee : 1 month + tax

Website : www.housserrep-tokyo.com

