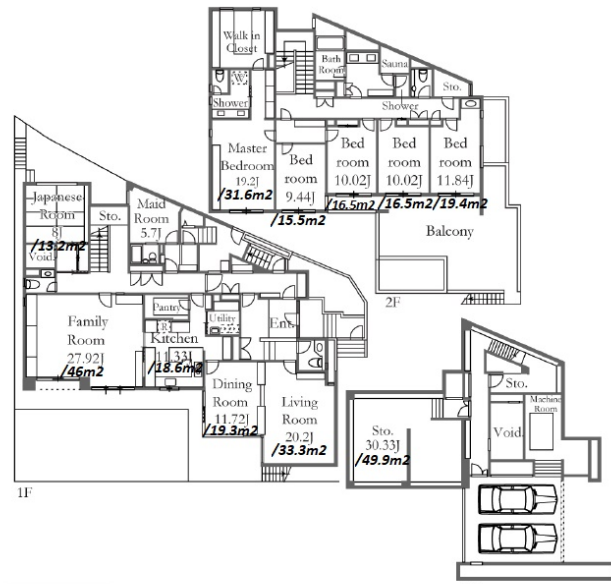


Property Name	GARDEN TERRACE SEKIGUCHI	Unit No.	TYPE	Access	Edogawabashi Station on Yurakucho Line (7 min) Gokokuji Station on Yurakucho Line (12 min)
		-	House		
Address	3-5-15, Sekiguchi, Bunkyo-Ku, Tokyo				



Lease Conditions	
LAYOUT	6 BR
SIZE	572.35 m <sup>2</sup> /6160.72 ft <sup>2</sup>
RENT	JPY 1,950,000 / month
Management Fee	-
Deposit	3 months
Key Money	1 month
Lease Term	Fixed term lease for 36 months
Available	Now
Renewal Fee	-
Agent Fee	1 month + tax
Other Info	Guarantor Company : TBC / Air-Con / Separated Toilet / Balcony / Musical Instrument Negotiable / Garden/Terrace / Floor Heating / Washer / Dryer / Dishwasher / Oven / 2 Car Parks / 2 Toilets

Building Information	
Completion	Mar, 1994
Earthquake Resistance	New
Structure	RC, 2 floors above and 1 basement floors
Car Parking	for 2 spaces ( Included )
Bicycle Parking	-
Music Instrument	Negotiable
Pet	Negotiable
Facilities	Trunk Room (( Included )) / House / Security

Remarks
Renters Insurance : Required

\*The actual Layout & Size may differ slightly from this floor plans & pictures.



HOUSEREP TOKYO INC.

ハウスレップトーキョー株式会社

#301, 1-4-15, Hiroo, Shibuya-ku, Tokyo 150-0012, Japan

+81 (0)3 6427 5860

inquiry@housserrep-tokyo.com

Transaction Type : Intermediate

Agent Fee : 1 month + tax

Website : www.housserrep-tokyo.com

