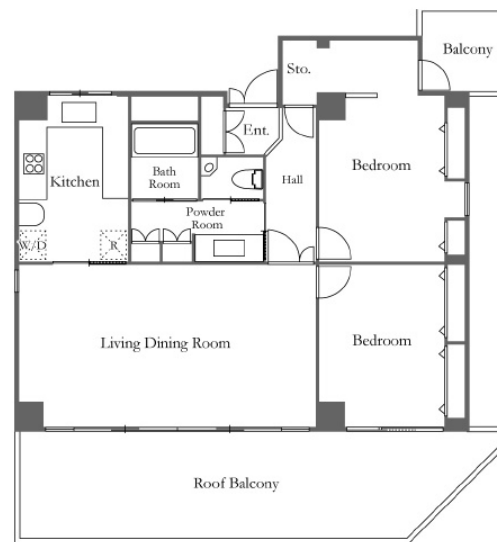


Property Name	FLAT NIBANCHO	Unit No.	TYPE	Access	Koujimachi Station on Yurakucho Line (3 min) Yotsuya Station on JR Chuo Line Rapid Service (5 min) Yotsuya Station on Marunouchi Line (5 min)
		401	Apt.		
Address	10-2, Nibancho, Chiyoda-Ku, Tokyo				



Lease Conditions			
LAYOUT	2 BR		
SIZE	90.33 m ² /972.3 ft ²		
RENT	JPY 420,000 / month		
Management Fee	-		
Deposit	2 months	Key Money	1 month
Lease Term	Fixed term lease for 36 months		
Available	Now		
Renewal Fee	-		
Agent Fee	1 month + tax		
Other Info	Guarantor Company : TBC / Auto lock / Air-Con / Separated Toilet / Balcony / Internet (Extra Charge) / Flooring / Dishwasher / Oven		

Building Information			
Completion	Jan, 1979	Earthquake Resistance	Old
Structure	RC, 4 floors above		
Car Parking	N/A		
Bicycle Parking	-		
Music Instrument	-	Pet	N/A
Facilities	Within 20 min to Tokyo station by car / Security / Close to Station / 24h Garbage Drop-off / Low-rise		

Remarks
Renters Insurance : Required

*The actual Layout & Size may differ slightly from this floor plans & pictures.



HOUSEREP TOKYO INC.

ハウスレップトーキョー株式会社

#301, 1-4-15, Hiroo, Shibuya-ku, Tokyo 150-0012, Japan

+81 (0)3 6427 5860

inquiry@housserrep-tokyo.com

Transaction Type : Intermediate

Agent Fee : 1 month + tax

Website : www.housserrep-tokyo.com

