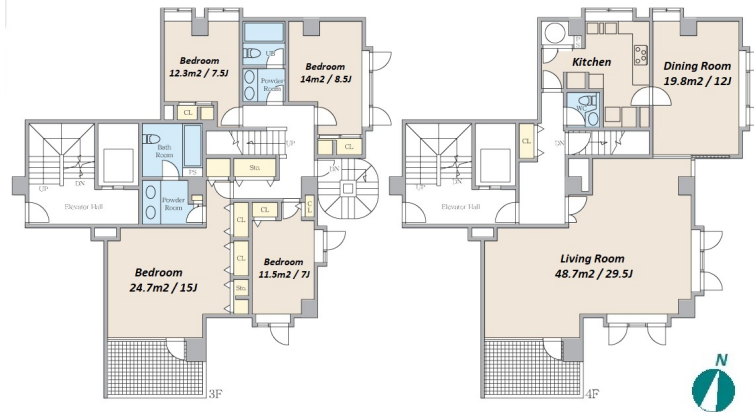


Property Name	MEIJI PARK HEIGHTS	Unit No.	TYPE	Access	Shinanomachi Station on JR Chuo-Sobu Line (9 min) Yotsuya Station on Marunouchi Line (12 min) Yotsuya Station on Namboku Line (12 min)
		402	House		
Address	9-9, Minamimotomachi, Shinjuku-Ku, Tokyo				



Lease Conditions		
LAYOUT	4 BR	
SIZE	201.37 m <sup>2</sup> /2167.52 ft <sup>2</sup>	
RENT	JPY 800,000 / month	
Management Fee	-	
Deposit	2 months	Key Money 1 month
Lease Term	Fixed term lease for 36 months	
Available	Early, Nov, 2024	
Renewal Fee	-	
Agent Fee	1 month + tax	
Other Info	Key Replacement Fee : JPY15,000 Tax not included / Auto lock / Air-Con / Loft/Maisonnette / Internet (Extra Charge) / Penalty Fee for Early Cancellation / 2+ bathrooms / Washer / Dryer / Oven / Corner Unit / 2 Toilets	

Building Information		
Completion	Mar, 1983	Earthquake Resistance New
Structure	RC, 5 floors above and 1 basement floors	
Car Parking	for 1 space ( Included )	
Bicycle Parking	-	
Music Instrument	-	Pet Negotiable
Facilities	Trunk Room (for 1 space( Included )) / Near Large Parks / Elevator / Low-rise	

Remarks
Renters Insurance : Required

\*The actual Layout & Size may differ slightly from this floor plans & pictures.



HOUSEREP TOKYO INC.

ハウズレップトーキョー株式会社

#301, 1-4-15, Hiroo, Shibuya-ku, Tokyo 150-0012, Japan

+81 (0)3 6427 5860

inquiry@housserrep-tokyo.com

Transaction Type : Intermediate

Agent Fee : 1 month + tax

Website : www.housserrep-tokyo.com

