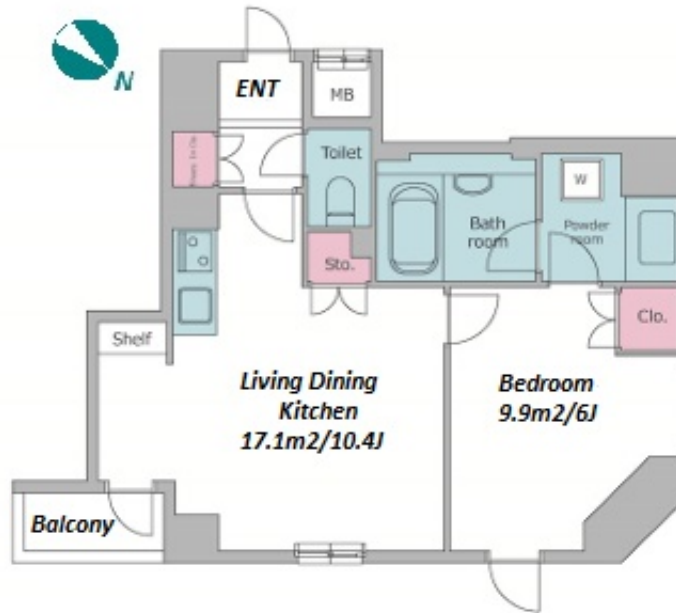


Property Name	RESIDIA MITSUKOSHIMAE	Unit No.	TYPE	Access	Shinnihonbashi Station on JR Sobu Line (2 min) Kodenmachou Station on Hibiya Line (4 min) Mitsukoshimae Station on Ginza Line (6 min)
		1101	Apt.		
Address	3-6-7, Nihombashihoncho, Chuo-Ku, Tokyo				



Lease Conditions			
LAYOUT	1 BR		
SIZE	40.7 m²/438.09 ft²		
RENT	JPY 183,000 / month		
Management Fee	JPY 15,000/month		
Deposit	2 months	Key Money	1 month
Lease Term	Standard lease for 24 months		
Available	Early, Nov, 2024		
Renewal Fee	1 month		
Agent Fee	1 month + tax		
Other Info	Key Replacement Fee : JPY 19,500 Tax not included / Guarantor Company : TBC / Auto lock / Renovated / Air-Con / Separated Toilet / Balcony / Penalty Fee for Early Cancellation / CS/CATV / Flooring / Bathroom dryer		

Building Information			
Completion	Feb, 2005	Earthquake Resistance	New
Structure	SRC, 15 floors above		
Car Parking	-		
Bicycle Parking	-		
Music Instrument	-	Pet	N/A
Facilities	Within 20 min to Tokyo station by car / Delivery box / Elevator / Security / Close to Station / 24h Garbage Drop-off / High-rise		

Remarks	
Renters Insurance : Required / Tenant support fee: JPY.10,000+tax/2years	

\*The actual Layout & Size may differ slightly from this floor plans & pictures.



HOUSEREP TOKYO INC.

ハウスレップトーキョー株式会社

#301, 1-4-15, Hiroo, Shibuya-ku, Tokyo 150-0012, Japan

+81 (0)3 6427 5860 inquiry@housserrep-tokyo.com

Transaction Type : Intermediate

Agent Fee : 1 month + tax

Website : www.housserrep-tokyo.com

