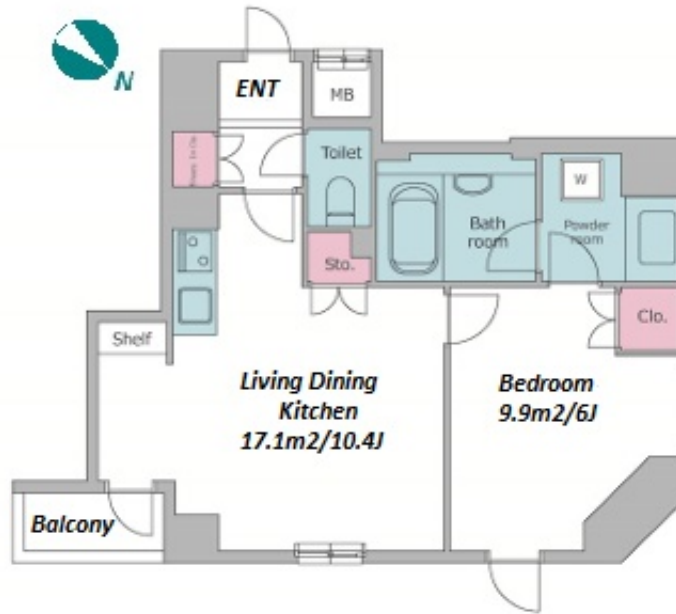


Property Name	RESIDIA MITSUKOSHIMAE	Unit No.	TYPE	Access	Shinnihonbashi Station on JR Sobu Line (2 min) Kodenmachou Station on Hibiya Line (4 min) Mitsukoshimae Station on Ginza Line (6 min)
		1501	Apt.		
Address	3-6-7, Nihombashihoncho, Chuo-Ku, Tokyo				



Lease Conditions		
LAYOUT	1 BR	
SIZE	40.7 m <sup>2</sup> /438.09 ft <sup>2</sup>	
RENT	JPY 190,000 / month	
Management Fee	JPY 15,000/month	
Deposit	2 months	Key Money 1 month
Lease Term	Standard lease for 24 months	
Available	Early, Nov, 2024	
Renewal Fee	1 month	
Agent Fee	1 month + tax	
Other Info	Key Replacement Fee : JPY 19,500 Tax not included / Guarantor Company : TBC / Auto lock / Renovated / Air-Con / Separated Toilet / Balcony / Penalty Fee for Early Cancellation / CS/CATV / Flooring / Bathroom dryer	

Building Information		
Completion	Feb, 2005	Earthquake Resistance New
Structure	SRC, 15 floors above	
Car Parking	-	
Bicycle Parking	-	
Music Instrument	-	Pet N/A
Facilities	Within 20 min to Tokyo station by car / Delivery box / Elevator / Security / Close to Station / 24h Garbage Drop-off / High-rise	

Remarks
Renters Insurance : Required / Tenant support fee: JPY.10,000+tax/2years

\*The actual Layout & Size may differ slightly from this floor plans & pictures.



HOUSEREP TOKYO INC.

ハウスレップトーキョー株式会社

#301, 1-4-15, Hiroo, Shibuya-ku, Tokyo 150-0012, Japan

+81 (0)3 6427 5860

inquiry@housserrep-tokyo.com

Transaction Type : Intermediate

Agent Fee : 1 month + tax

Website : www.housserrep-tokyo.com

