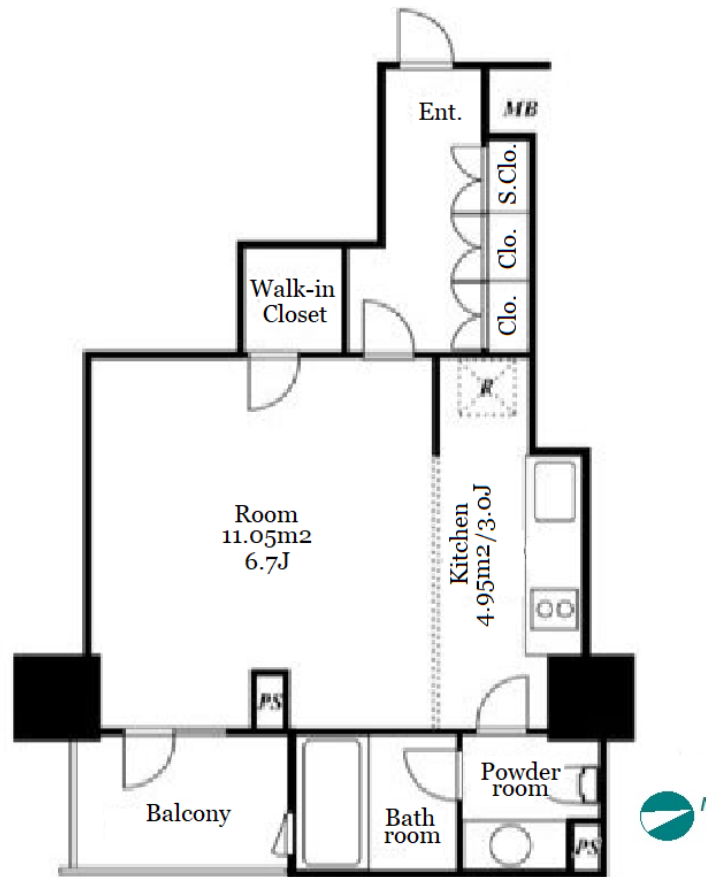


Property Name	KDX RESIDENCE TOGOSHI	Unit No.	TYPE	Access	
		711	Apt.		
Address	5-1-1, Togoshi, Shinagawa-Ku, Tokyo			Togoshiginnza Station on Toei Asakusa Line (4 min) Togoshikouenn Station on Oimachi Line (6 min) Togoshiginnza Station on Tokyu Ikegami Line (8 min)	

## Luxury Apartment w/ Amenities in Togoshi, near Shinagawa



\*The actual Layout & Size may differ slightly from this floor plans & pictures.

Lease Conditions			
LAYOUT	Studio		
SIZE	30.99 m <sup>2</sup> /333.57 ft <sup>2</sup>		
RENT	JPY 134,000 / month		
Management Fee	JPY8,000/month		
Deposit	2 months	Key Money	-
Lease Term	Standard lease for 24 months		
Available	End, Oct, 2024		
Renewal Fee	1 month		
Agent Fee	1 month + tax		
Other Info	Key Replacement Fee : JPY18,000 Tax not included / Guarantor Company : TBC / No Key Money / Auto lock / Air-Con / Separated Toilet / Balcony / Internet Included / Penalty Fee for Early Cancellation / Flooring / Washer / Dryer / Bathroom dryer / WIC		
Building Information			
Completion	Nov, 2006	Earthquake Resistance	New
Structure	RC, 14 floors above and 1 basement floors		
Car Parking	JPY34,000 ~ 36,000 + tax / month		
Bicycle Parking	N/A		
Music Instrument	-	Pet	N/A
Facilities	Gym (( Included )) / Janitor / Delivery box / Elevator / Security / Close to Station / Fitness / Gym		

Remarks	



# HOUSEREP TOKYO INC.

ハウズレップトーキョー株式会社

#301, 1-4-15, Hiroo, Shibuya-ku, Tokyo 150-0012, Japan

+81 (0)3 6427 5860

inquiry@housserep-tokyo.com

Transaction Type : Intermediate

Agent Fee : 1 month + tax

Website : www.housserep-tokyo.com

