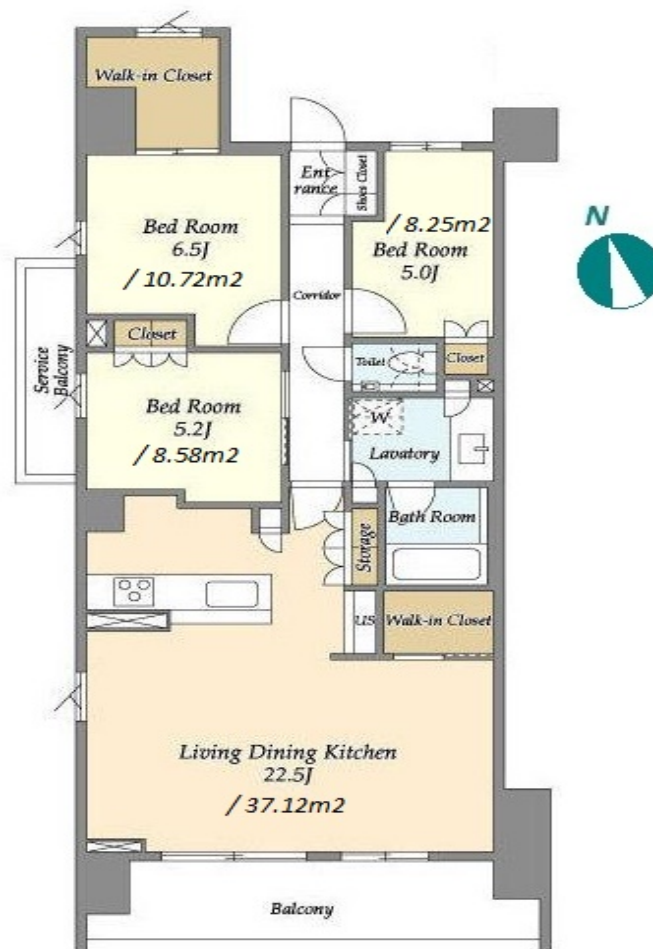
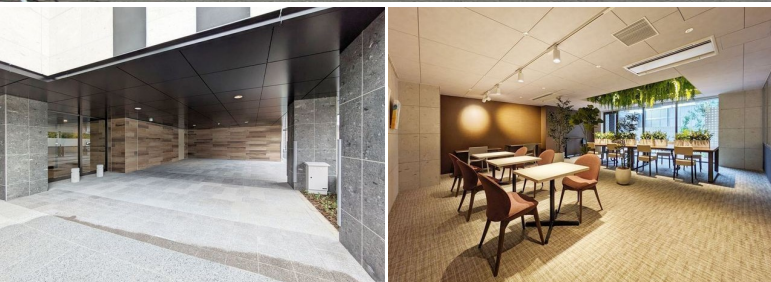


|               |                                       |          |      |        |                                                                                       |
|---------------|---------------------------------------|----------|------|--------|---------------------------------------------------------------------------------------|
| Property Name | JP NOIE TODOROKI                      | Unit No. | TYPE | Access | Todoroki Station on Oimachi Line (8 min)<br>Kaminoge Station on Oimachi Line (12 min) |
|               |                                       | 401      | Apt. |        |                                                                                       |
| Address       | 2-9-14, Nakamachi, Setagaya-Ku, Tokyo |          |      |        |                                                                                       |

## Stylish Low Rise Apt near Todoroki stn. w/ a Roof Terrace



\*The actual Layout & Size may differ slightly from this floor plans & pictures.

| Lease Conditions |                                                                                                                                                                             |
|------------------|-----------------------------------------------------------------------------------------------------------------------------------------------------------------------------|
| LAYOUT           | 4 BR                                                                                                                                                                        |
| SIZE             | 90.66 m <sup>2</sup> /975.85 ft <sup>2</sup>                                                                                                                                |
| RENT             | JPY 360,000 / month                                                                                                                                                         |
| Management Fee   | JPY15,000/month                                                                                                                                                             |
| Deposit          | 1 month                                                                                                                                                                     |
| Key Money        | 2 months                                                                                                                                                                    |
| Lease Term       | Standard lease for 24 months                                                                                                                                                |
| Available        | Now                                                                                                                                                                         |
| Renewal Fee      | 1 month                                                                                                                                                                     |
| Agent Fee        | 1 month + tax                                                                                                                                                               |
| Other Info       | Guarantor Company : TBC / Auto lock / Air-Con / Separated Toilet / Balcony / Internet Included / Flooring / Floor Heating / Dishwasher / Bathroom dryer / WIC / Corner Unit |

| Building Information |                                                                                                                         |                       |     |
|----------------------|-------------------------------------------------------------------------------------------------------------------------|-----------------------|-----|
| Completion           | Sep, 2024                                                                                                               | Earthquake Resistance | New |
| Structure            | RC, 8 floors above                                                                                                      |                       |     |
| Car Parking          | JPY33,000/ month                                                                                                        |                       |     |
| Bicycle Parking      | JPY330 ~ 550/ month                                                                                                     |                       |     |
| Music Instrument     | -                                                                                                                       | Pet                   | -   |
| Facilities           | Motorcycle Parking (JPY5,500/ month) / Delivery box / Elevator / 24h Garbage Drop-off / Low-rise / Newly-built (~1 y/o) |                       |     |

| Remarks                      |
|------------------------------|
| Renters Insurance : Required |



HOUSEREP TOKYO INC.

ハウズレップトーキョー株式会社

#301, 1-4-15, Hiroo, Shibuya-ku, Tokyo 150-0012, Japan

+81 (0)3 6427 5860

inquiry@housserrep-tokyo.com

Transaction Type : Intermediate

Agent Fee : 1 month + tax

Website : www.housserrep-tokyo.com

