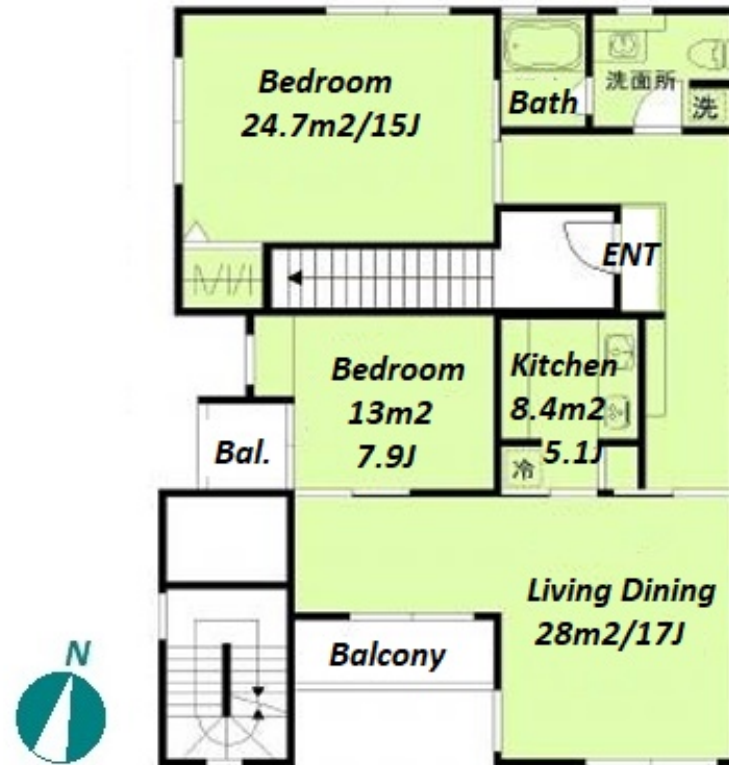


Property Name	W TERRACE	Unit No.	TYPE	Access	Toritsudaigaku Station on Toyoko Line (13 min) Gakugeidaigaku Station on Toyoko Line (15 min)
		D	Apt.		
Address	4-7, Himonya, Meguro-Ku, Tokyo				



\*The actual Layout & Size may differ slightly from this floor plans & pictures.

## Lease Conditions

LAYOUT	2 BR		
SIZE	99.65 m²/1072.62 ft²		
RENT	JPY 379,000 / month		
Management Fee	JPY20,000/month		
Deposit	2 months	Key Money	1 month
Lease Term	Standard lease for 24 months		
Available	Early, Nov, 2024		
Renewal Fee	1 month		
Agent Fee	1 month + tax		
Other Info	Air-Con / Separated Toilet / Balcony / Internet Included / CS/CATV / Flooring / IH Stoves / Bathroom dryer / Corner Unit		

## Building Information

Completion	Oct, 2024	Earthquake Resistance	New
Structure	RC, 2 floors above		
Car Parking	N/A		
Bicycle Parking	for 1 space ( Included )		
Music Instrument	-	Pet	-
Facilities	Delivery box / Security / Low-rise / Newly-built (~1 y/o)		

## Remarks

Renters Insurance : Required



HOUSEREP TOKYO INC.

ハウスレップト-キョ-株式会社

#301, 1-4-15, Hiroo, Shibuya-ku, Tokyo 150-0012, Japan

+81 (0)3 6427 5860

inquiry@housserrep-tokyo.com

Transaction Type : Intermediate

Agent Fee : 1 month + tax

Website : www.housserrep-tokyo.com

