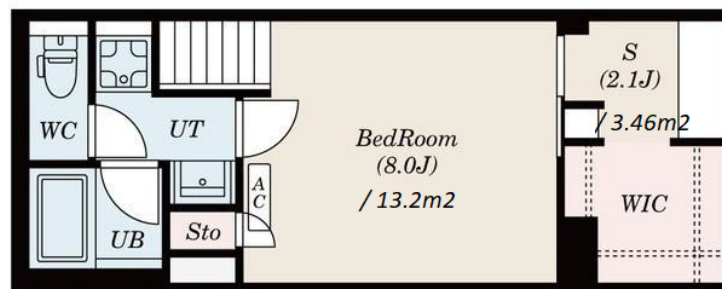
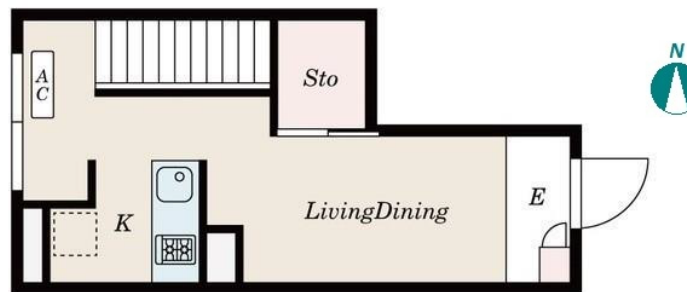
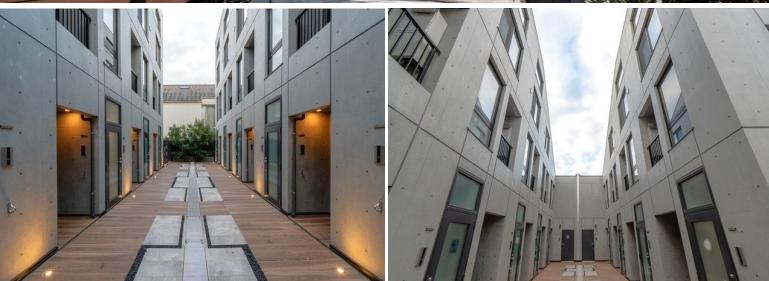
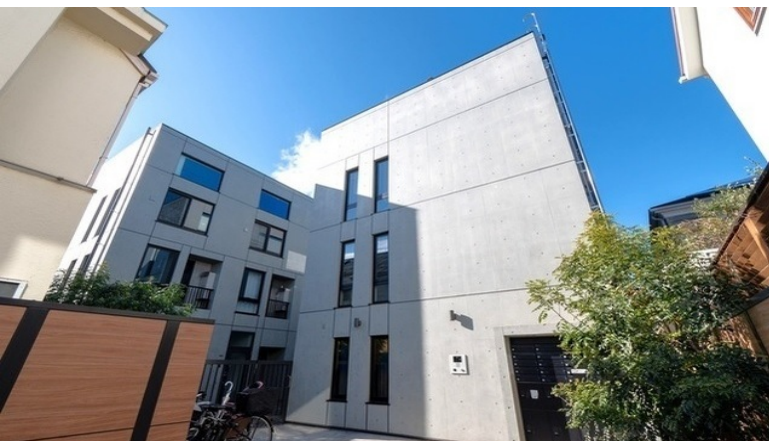


Property Name	FLUFFY JIYUGAOKA	Unit No.	TYPE	Access	Jiyugaoka Station on Toyoko Line (6 min)
		105	Apt.		
Address	2-7-9, Jiyugaoka, Meguro-Ku, Tokyo				

Stylish Designers Apt. in Jiyugaoka / Large-size Dog Friendly



Lease Conditions	
LAYOUT	1 BR
SIZE	49.09 m ² /528.4 ft ²
RENT	JPY 214,000 / month
Management Fee	JPY15,000/month
Deposit	-
Key Money	-
Lease Term	Fixed term lease for 24 months
Available	Now
Renewal Fee	1 month
Agent Fee	1 month + tax
Other Info	Key Replacement Fee : JPY20,000 Tax not included / Guarantor Company : TBC / Auto lock / Air-Con / Separated Toilet / Loft/Maisonnette / Internet (Extra Charge) / SOHO Allowed / Penalty Fee for Early Cancellation / CS/CATV / Flooring / Bathroom dryer / WIC

Building Information			
Completion	Aug, 2021	Earthquake Resistance	New
Structure	RC, 3 floors above and 1 basement floors		
Car Parking	TBC		
Bicycle Parking	TBC		
Music Instrument	-	Pet	Negotiable
Facilities	Near Large Parks / Designer's / Delivery box / Elevator / Newly-built (~7 y/o)		

*The actual Layout & Size may differ slightly from this floor plans & pictures.



HOUSEREP TOKYO INC.

ハウズレップトーキョー株式会社

#301, 1-4-15, Hiroo, Shibuya-ku, Tokyo 150-0012, Japan

+81 (0)3 6427 5860

inquiry@housserep-tokyo.com

Transaction Type : Intermediate

Agent Fee : 1 month + tax

Website : www.housserep-tokyo.com



Remarks
Renters Insurance : Required / Pet: additional 1month deposit