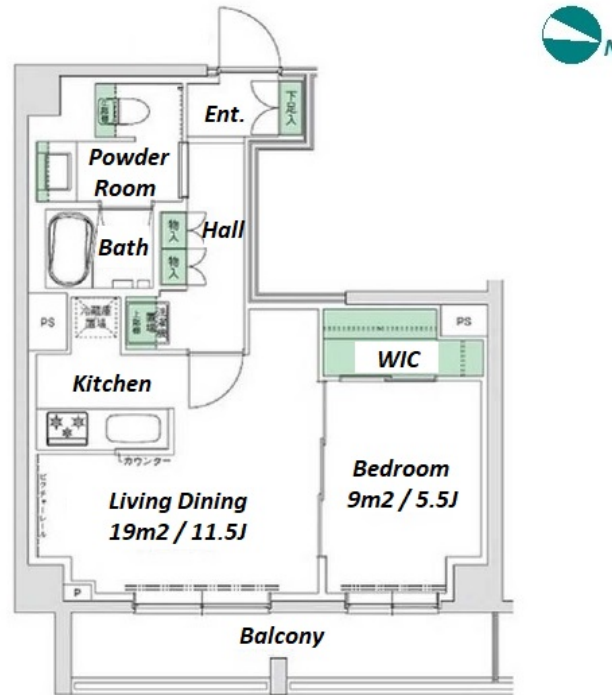
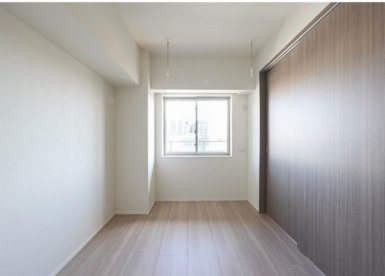


Property Name	STYLIO SANGENCHAYA	Unit No.	TYPE	Access	Sanngennjaya Station on Denentoshi Line (10 min) Nishitaishidou Station on Tokyu Setagaya Line (10 min)
		601	Apt.		
Address	5-29-18, Taishido, Setagaya-Ku, Tokyo				



Lease Conditions

LAYOUT	1 BR		
SIZE	45.53 m²/490.08 ft²		
RENT	JPY 235,000 / month		
Management Fee	JPY12,000/month		
Deposit	1 month	Key Money	1 month
Lease Term	Standard lease for 24 months		
Available	End, Oct, 2024		
Renewal Fee	1 month		
Agent Fee	1 month + tax		
Other Info	Key Replacement Fee : JPY30,000 Tax not included / Auto lock / Air-Con / Separated Toilet / Balcony / Internet Included / Flooring / Bathroom dryer / WIC		

Building Information

Completion	Jan, 2023	Earthquake Resistance	New
Structure	RC, 7 floors above		
Car Parking	-		
Bicycle Parking	(Included)		
Music Instrument	-	Pet	-
Facilities	Delivery box / Elevator / Security / 24h Garbage Drop-off / Newly-built (~7 y/o)		

Remarks

Remarks	Renters Insurance : Required
---------	------------------------------

*The actual Layout & Size may differ slightly from this floor plans & pictures.



HOUSEREP TOKYO INC.

ハウズレップトーキョー株式会社

#301, 1-4-15, Hiroo, Shibuya-ku, Tokyo 150-0012, Japan

+81 (0)3 6427 5860

inquiry@housserrep-tokyo.com

Transaction Type : Intermediate

Agent Fee : 1 month + tax

Website : www.housserrep-tokyo.com

