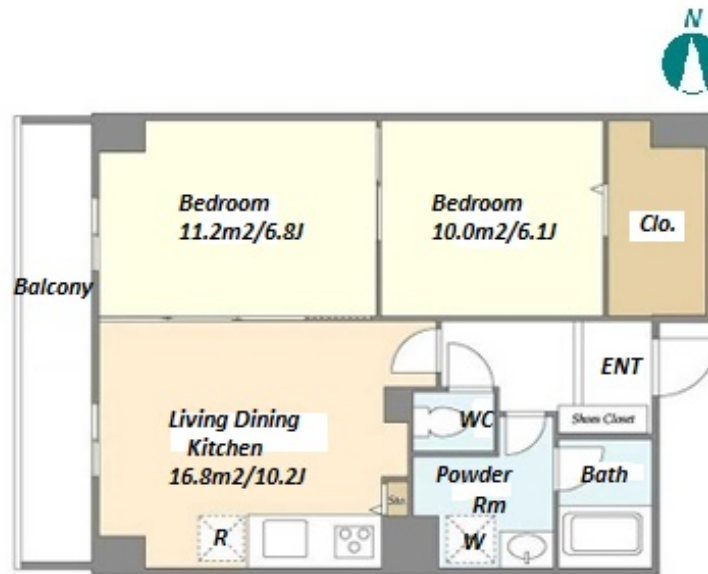


Property Name	BLANCE SHIBAURA	Unit No.	TYPE	Access	Tamachi Station on JR Yamanote Line (11 min) Senngakuji Station on Toei Asakusa Line (19 min)
		704	Apt.		
Address	4-9-21, Shibaura, Minato-Ku, Tokyo				



Lease Conditions	
LAYOUT	2 BR
SIZE	54.52 m²/586.84 ft²
RENT	JPY 220,000 / month
Management Fee	JPY 15,000/month
Deposit	2 months
Key Money	-
Lease Term	Standard lease for 24 months
Available	Now
Renewal Fee	1 month
Agent Fee	1 month + tax
Other Info	Key Replacement Fee : JPY30,000 Tax not included / Guarantor Company : TBC / No Key Money / Auto lock / Air-Con / Separated Toilet / Balcony / Penalty Fee for Early Cancellation / Bathroom dryer

Building Information	
Completion	Nov, 1997
Earthquake Resistance	New
Structure	SRC, 9 floors above
Car Parking	extra charge
Bicycle Parking	(Included)
Music Instrument	-
Pet	N/A
Facilities	Janitor / Delivery box / Elevator / Security / 24h Garbage Drop-off

Remarks
Renters Insurance : Required

*The actual Layout & Size may differ slightly from this floor plans & pictures.



HOUSEREP TOKYO INC.

ハウスレップトーキョー株式会社

#301, 1-4-15, Hiroo, Shibuya-ku, Tokyo 150-0012, Japan

+81 (0)3 6427 5860 inquiry@housserep-tokyo.com

Transaction Type : Intermediate

Agent Fee : 1 month + tax

Website : www.housserep-tokyo.com

