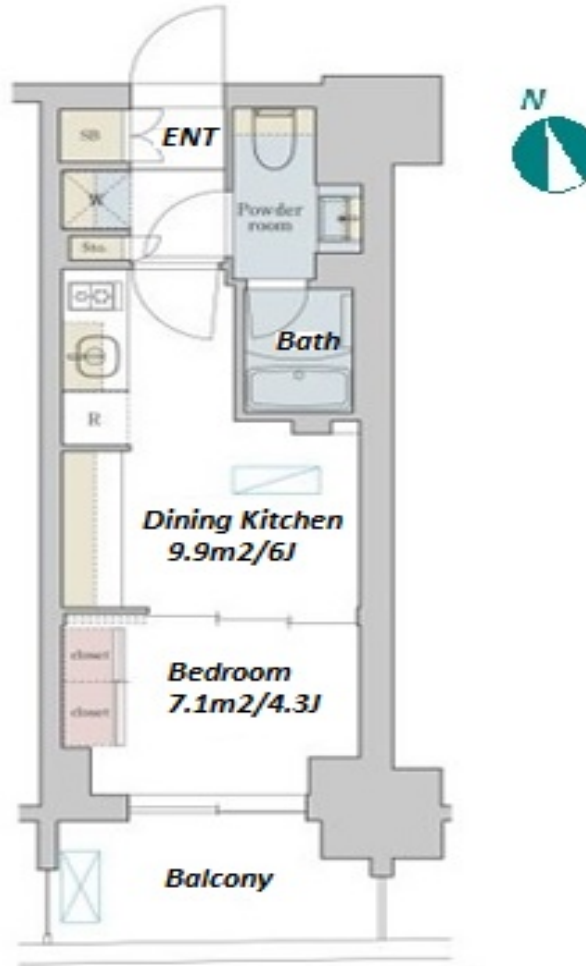


Property Name	BRILLIA IST MACHIYA	Unit No.	TYPE	Access	Machiya Station on Chiyoda Line (2 min) Machiyaekimae Station on Toden Arawaka Line (2 min) Machiya Station on Keisei Main Line (3 min)
		502	Apt.		
Address	6-6-4, Arakawa, Arakawa-Ku, Tokyo				

## Mid-rise apartment in Machiya area



\*The actual Layout & Size may differ slightly from this floor plans & pictures.

Lease Conditions	
LAYOUT	1 BR
SIZE	25.11 m <sup>2</sup> /270.28 ft <sup>2</sup>
RENT	JPY 121,000 / month
Management Fee	JPY10,000/month
Deposit	2 months
Key Money	-
Lease Term	Standard lease for 24 months
Available	End, Nov, 2024
Renewal Fee	1 month
Agent Fee	1 month + tax
Other Info	Key Replacement Fee : JPY25,000 Tax not included / Guarantor Company : TBC / No Key Money / Auto lock / Air-Con / Separated Toilet / Balcony / Penalty Fee for Early Cancellation / Flooring / Bathroom dryer

Building Information			
Completion	Mar, 2022	Earthquake Resistance	New
Structure	RC, 12 floors above		
Car Parking	N/A		
Bicycle Parking	extra charge		
Music Instrument	-	Pet	Allowed
Facilities	Motorcycle Parking (TBC) / Delivery box / Elevator / Security / Close to Station / 24h Garbage Drop-off / Newly-built (~7 y/o)		

Remarks
Renters Insurance : Required / Pet:additional deposit ( 1 month ) / Pet : a small dog or a cat



HOUSEREP TOKYO INC.

ハウスレップトーキョー株式会社

#301, 1-4-15, Hiroo, Shibuya-ku, Tokyo 150-0012, Japan

+81 (0)3 6427 5860

inquiry@housserrep-tokyo.com

Transaction Type : Intermediate

Agent Fee : 1 month + tax

Website : www.housserrep-tokyo.com

