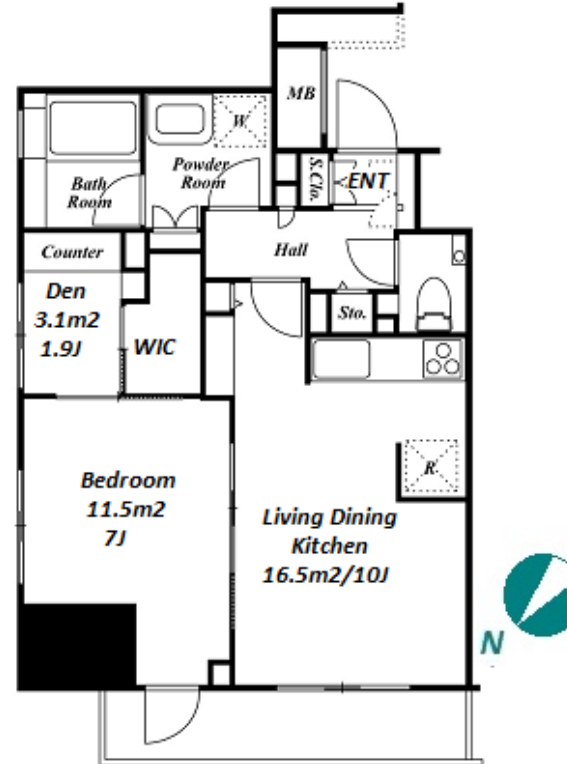


Property Name	ASAHI MANSION GOTANDA	Unit No.	TYPE	Access	Gotanda Station on JR Yamanote Line (5 min) Gotanda Station on Toei Asakusa Line (5 min) Gotanda Station on Tokyu Ikegami Line (5 min)
		702	Apt.		
Address	2-28-4, Nishigotanda, Shinagawa-Ku, Tokyo				

High-rise Apt. in Gotanda, easy access to Ebisu, Shibuya, Shinjuku



Lease Conditions			
LAYOUT	1 BR+Den		
SIZE	47.59 m²/512.25 ft²		
RENT	JPY 199,000 / month		
Management Fee	JPY 10,000/month		
Deposit	2 months	Key Money	-
Lease Term	Fixed term lease for 36 months		
Available	Early, Oct, 2024		
Renewal Fee	-		
Agent Fee	1 month + tax		
Other Info	Guarantor Company : TBC / No Key Money / Auto lock / Air-Con / Separated Toilet / Balcony / Penalty Fee for Early Cancellation / Musical Instrument Negotiable / Flooring / Bathroom dryer / WIC / Corner Unit		

Building Information			
Completion	Apr, 2013	Earthquake Resistance	New
Structure	RC, 18 floors above		
Car Parking	TBC		
Bicycle Parking	TBC		
Music Instrument	Negotiable	Pet	N/A
Facilities	Within 20 min to Roppongi by train / Within 20 min to Tokyo station by car / Near Large Parks / Delivery box / Elevator / High-rise		

Remarks

*The actual Layout & Size may differ slightly from this floor plans & pictures.



HOUSEREP TOKYO INC.

ハウスレップトーキョー株式会社

#301, 1-4-15, Hiroo, Shibuya-ku, Tokyo 150-0012, Japan

+81 (0)3 6427 5860

inquiry@housserep-tokyo.com

Transaction Type : Intermediate

Agent Fee : 1 month + tax

Website : www.housserep-tokyo.com

