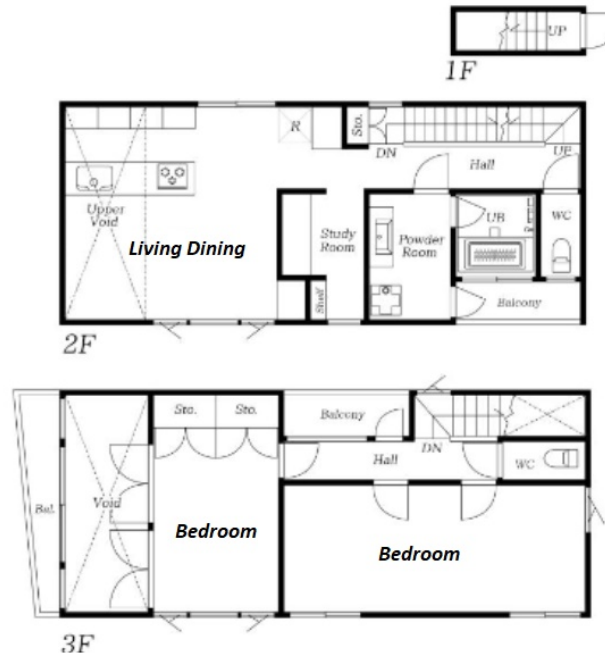


Property Name	HIGASHI 3CHOME HOUSE C	Unit No.	TYPE	Access	Ebisu Station on JR Yamanote Line (10 min)
		C	House		
Address	3-2-4, Higashi, Shibuya-Ku, Tokyo				



Lease Conditions			
LAYOUT	2 BR		
SIZE	88.6 m <sup>2</sup> /953.68 ft <sup>2</sup>		
RENT	JPY 400,000 / month		
Management Fee	-		
Deposit	2 months	Key Money	1 month
Lease Term	Fixed term lease for 24 months		
Available	Early, Oct, 2024		
Renewal Fee	-		
Agent Fee	1 month + tax		
Other Info	Air-Con / Separated Toilet / Balcony / Flooring / Dishwasher / Bathroom dryer / 2 Toilets		

Building Information			
Completion	Dec, 2019	Earthquake Resistance	New
Structure	RC, 3 floors above and 1 basement floors		
Car Parking	N/A		
Bicycle Parking	( Included )		
Music Instrument	-	Pet	Negotiable
Facilities	House / Newly-built (~7 y/o)		

Remarks
Renters Insurance : Required / Tenant support fee: 16,500yen/2yrs

\*The actual Layout & Size may differ slightly from this floor plans & pictures.



HOUSEREP TOKYO INC.

ハウスレップトーキョー株式会社

#301, 1-4-15, Hiroo, Shibuya-ku, Tokyo 150-0012, Japan

+81 (0)3 6427 5860

inquiry@housserrep-tokyo.com

Transaction Type : Intermediate

Agent Fee : 1 month + tax

Website : www.housserrep-tokyo.com

