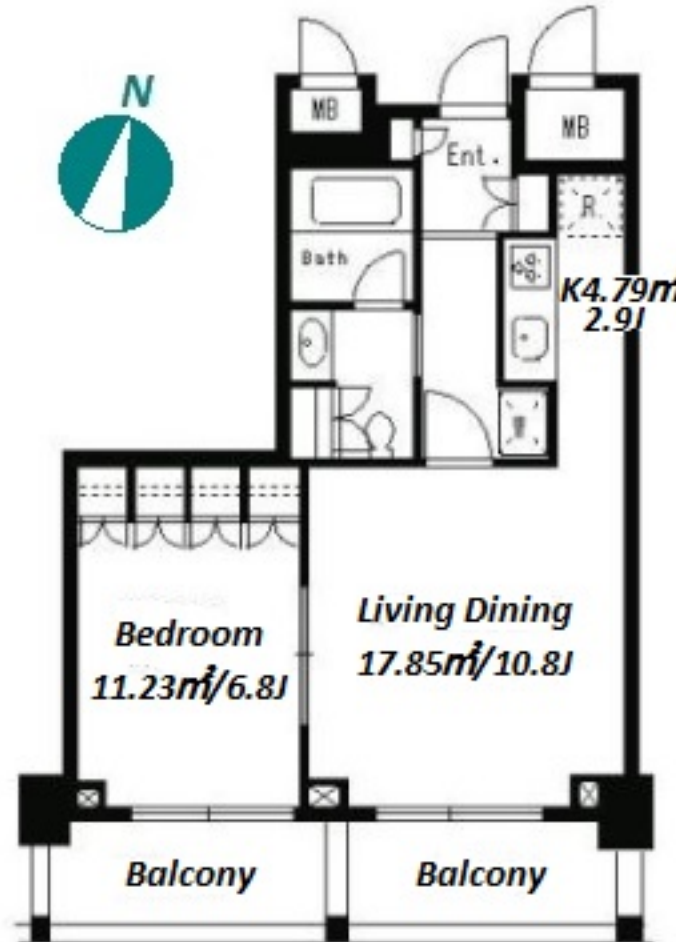


Property Name	PARK CUBE MEGURO TOWER	Unit No.	TYPE	Access	Meguro Station on JR Yamanote Line (6 min) Meguro Station on Namboku Line (6 min) Meguro Station on Mita Line (6 min)
		612	Apt.		
Address	2-2-2, Shimomeguro, Meguro-Ku, Tokyo				

Stylish High-rise Apt. along Meguro River



*The actual Layout & Size may differ slightly from this floor plans & pictures.

Lease Conditions			
LAYOUT	1 BR		
SIZE	49.23 m²/529.9 ft²		
RENT	JPY 262,000 / month		
Management Fee	-		
Deposit	2 months	Key Money	1 month
Lease Term	Standard lease for 24 months		
Available	End, Oct, 2024		
Renewal Fee	1 month		
Agent Fee	1 month + tax		
Other Info	Key Replacement Fee : JPY15,000 Tax not included / Guarantor Company : TBC / Auto lock / Air-Con / Separated Toilet / Balcony / Internet Included / Penalty Fee for Early Cancellation / Flooring / Bathroom dryer		

Building Information			
Completion	Feb, 2008	Earthquake Resistance	New
Structure	RC, 22 floors above and 2 basement floors		
Car Parking	JPY40,000 + tax / month		
Bicycle Parking	for 1 space (Included)		
Music Instrument	-	Pet	N/A
Facilities	Motorcycle Parking (TBC) / Gym ((Included)) / Within 20 min to Roppongi by train / Near Large Parks / Front desk / Janitor / Delivery box / Elevator / Security / High-rise		

Remarks
Renters Insurance : Required / Bicycle parking : 2,000yen+tax for a bike sticker



HOUSEREP TOKYO INC.

ハウスレップトーキョー株式会社

#301, 1-4-15, Hiroo, Shibuya-ku, Tokyo 150-0012, Japan

+81 (0)3 6427 5860 inquiry@housserrep-tokyo.com

Transaction Type : Intermediate

Agent Fee : 1 month + tax

Website : www.housserrep-tokyo.com

