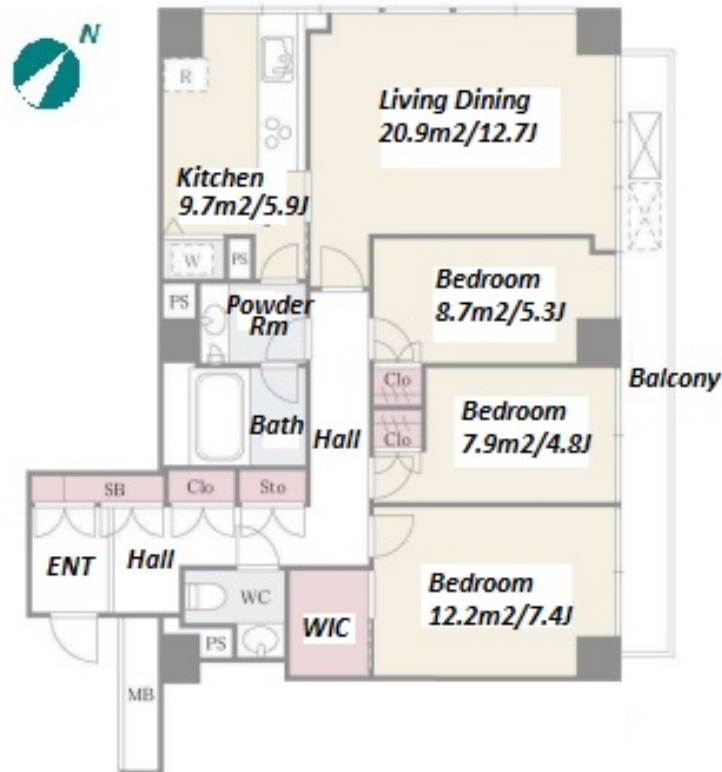


| | | | | | |
|---------------|---------------------------------------|----------|------|--------|---|
| Property Name | KOISHIKAWA PARK TOWER | Unit No. | TYPE | Access | Myougadani Station on Marunouchi Line (9 min) |
| | | 603 | Apt. | | |
| Address | 4-16-13, Koishikawa, Bunkyo-Ku, Tokyo | | | | |

Luxury High Rise Residence in Beautiful Town "Koishikawa"



| Lease Conditions | | | |
|------------------|--|-----------|------------|
| LAYOUT | 3 BR | | |
| SIZE | 91.22 m²/981.88 ft² | | |
| RENT | JPY 354,000 / month | | |
| Management Fee | JPY15,000/month | | |
| Deposit | 2 months | Key Money | 1.5 months |
| Lease Term | Standard lease for 24 months | | |
| Available | End, Nov, 2024 | | |
| Renewal Fee | 1 month | | |
| Agent Fee | 1 month + tax | | |
| Other Info | Key Replacement Fee : JPY20,000 Tax not included / Guarantor Company : TBC / Auto lock / Air-Con / Separated Toilet / Balcony / Flooring / Carpet / Oven / WIC | | |

| Building Information | | | |
|----------------------|--|-----------------------|---------|
| Completion | Sep, 1991 | Earthquake Resistance | New |
| Structure | SRC, 23 floors above and 2 basement floors | | |
| Car Parking | N/A | | |
| Bicycle Parking | N/A | | |
| Music Instrument | - | Pet | Allowed |
| Facilities | Motorcycle Parking (TBC) / French Community / Front desk / Janitor / High-rise | | |

| Remarks | |
|--|--|
| Renters Insurance : Required / Pet:additional deposit (1 month) / Pet : a small dog only | |

*The actual Layout & Size may differ slightly from this floor plans & pictures.



HOUSEREP TOKYO INC.

ハウスレップトーキョー株式会社

#301, 1-4-15, Hiroo, Shibuya-ku, Tokyo 150-0012, Japan

+81 (0)3 6427 5860

inquiry@housserrep-tokyo.com

Transaction Type : Intermediate

Agent Fee : 1 month + tax

Website : www.housserrep-tokyo.com

