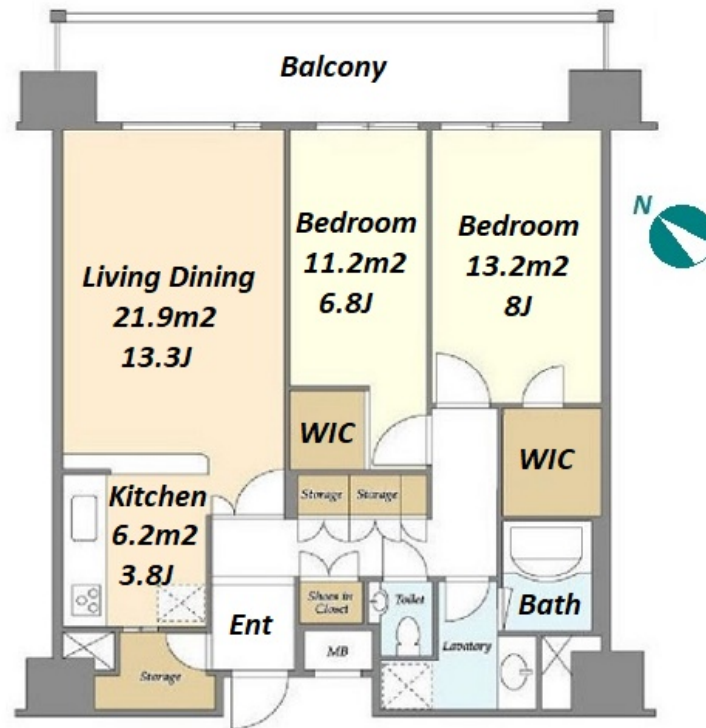
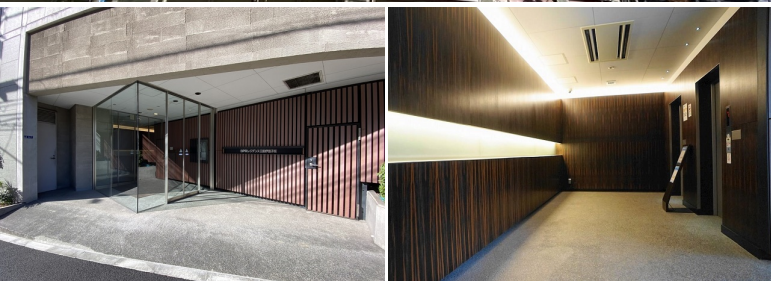


Property Name	BPR RESIDENCE MITA ISARAGOZAKA	Unit No.	TYPE	Access	Senngakuji Station on Toei Asakusa Line (5 min) Shirokanetakanawa Station on Mita Line (7 min)
		906	Apt.		
Address	4-9-7, Mita, Minato-Ku, Tokyo				

## Cozy Apartment in Mita, near Shirokane-takanawa, Rainbow Bridge



Lease Conditions		
LAYOUT	2 BR	
SIZE	82.08 m²/883.5 ft²	
RENT	JPY 427,000 / month	
Management Fee	JPY20,000/month	
Deposit	2 months	Key Money 1 month
Lease Term	Standard lease for 24 months	
Available	Mid, Sep, 2024	
Renewal Fee	1 month	
Agent Fee	1 month + tax	
Other Info	Key Replacement Fee : JPY30,000 Tax not included / Auto lock / Air-Con / Separated Toilet / Balcony / Flooring / Bathroom dryer	

Building Information		
Completion	Feb, 2007	Earthquake Resistance New
Structure	RC, 12 floors above and 1 basement floors	
Car Parking	TBC	
Bicycle Parking	for 1 space ( Included )	
Music Instrument	-	Pet Negotiable
Facilities	Near Large Parks / Janitor / Delivery box / Elevator	

Remarks
Renters Insurance : Required / Pet: Additional 1mo. deposit / Room Cleaning: JPY 77,800+tax (when moving out) / AC Cleaning: JPY 45,000+tax (when moving out)

\*The actual Layout & Size may differ slightly from this floor plans & pictures.



# HOUSEREP TOKYO INC.

ハウスレップトーキョー株式会社

#301, 1-4-15, Hiroo, Shibuya-ku, Tokyo 150-0012, Japan

+81 (0)3 6427 5860

inquiry@housserrep-tokyo.com

Transaction Type : Intermediate

Agent Fee : 1 month + tax

Website : www.housserrep-tokyo.com

