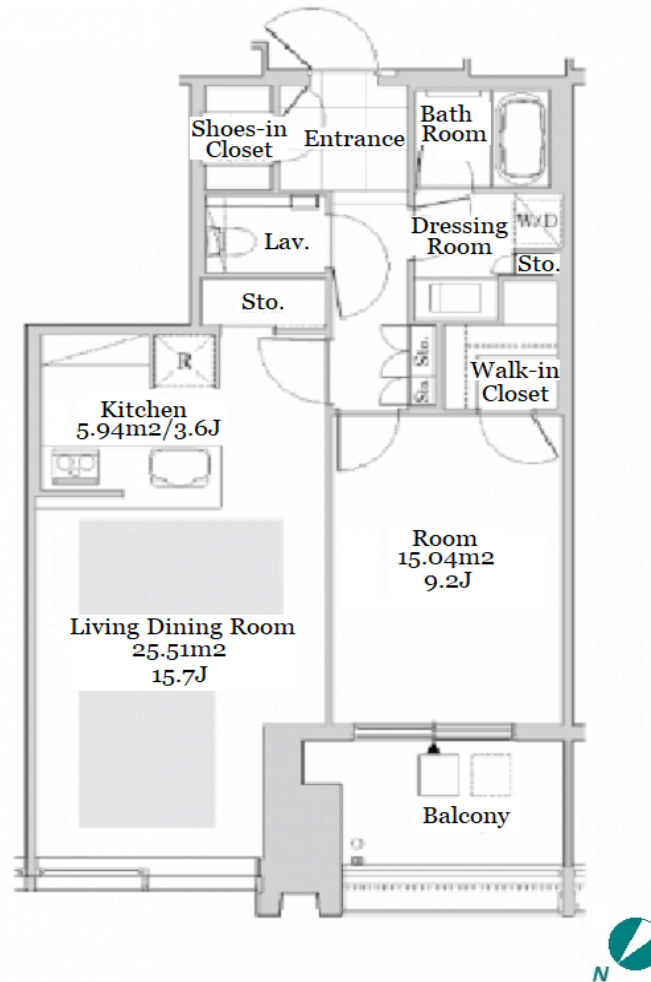


Property Name	LA TOUR SHINJUKU GARDEN	Unit No.	TYPE	Access	Takadanobaba Station on JR Yamanote Line (7 min) Shinnookubo Station on JR Yamanote Line (10 min)
		2416	Apt.		
Address	3-8-3, Okubo, Shinjuku-Ku, Tokyo				

Luxury Tower Residence in Shinjuku area, near Korea Town



Lease Conditions

LAYOUT	1 BR	
SIZE	68.4 m ² /736.25 ft ²	
RENT	JPY 420,000 / month	
Management Fee	-	
Deposit	2 months	Key Money -
Lease Term	Fixed term lease for 36 months	
Available	Now	
Renewal Fee	-	
Agent Fee	1 month + tax	
Other Info	Depreciation : 1 month / No Key Money / Auto lock / Air-Con / Separated Toilet / Balcony / Internet Included / Penalty Fee for Early Cancellation / Flooring / Floor Heating / Bathroom dryer / WIC	

Building Information

Completion	Mar, 2016	Earthquake Resistance	New
Structure	SRC, 37 floors above and 2 basement floors		
Car Parking	JPY35,000 ~ 60,000/ month		
Bicycle Parking	extra charge		
Music Instrument	-	Pet	Negotiable
Facilities	Motorcycle Parking (TBC) / Trunk Room (extra charge) / Gym ((Included)) / Near Large Parks / Front desk / Concierge / Elevator / Sky lounge / High-rise		

Remarks

--

*The actual Layout & Size may differ slightly from this floor plans & pictures.



HOUSEREP TOKYO INC.

ハウスレップトーキョー株式会社

#301, 1-4-15, Hiroo, Shibuya-ku, Tokyo 150-0012, Japan

+81 (0)3 6427 5860

inquiry@housserrep-tokyo.com

Transaction Type : Intermediate

Agent Fee : 1 month + tax

Website : www.housserrep-tokyo.com

