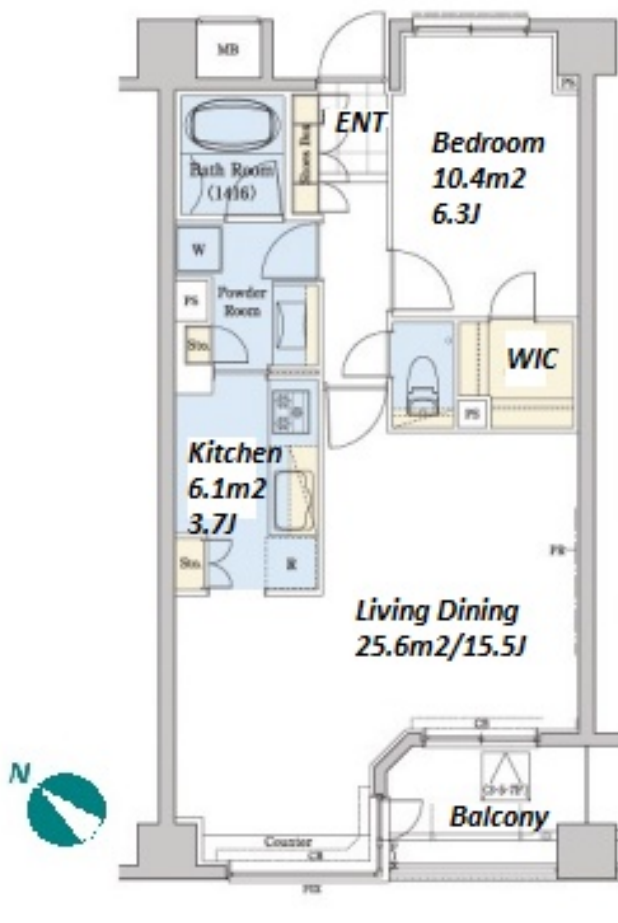
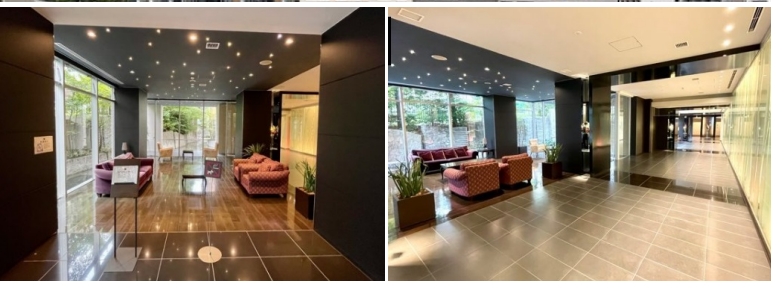


Property Name	RESIDIA TOWER KAMI-IKEBUKURO(PARK)	Unit No.	TYPE	Access	Ootsuka Station on JR Yamanote Line (10 min) Kitaikabukuro Station on (11 min) Nishisugamo Station on Mita Line (16 min)
		PR-303	Apt.		
Address	1-37-5, Kamiikebukuro, Toshima-Ku, Tokyo				

Stylish Tower Residence near Ikebukuro



Lease Conditions			
LAYOUT	1 BR		
SIZE	58.11 m ² /625.49 ft ²		
RENT	JPY 197,000 / month		
Management Fee	JPY15,000/month		
Deposit	2 months	Key Money	1 month
Lease Term	Fixed term lease for 36 months		
Available	Now		
Renewal Fee	-		
Agent Fee	1 month + tax		
Other Info	Key Replacement Fee : JPY20,000 Tax not included / Guarantor Company : TBC / Auto lock / Air-Con / Separated Toilet / Balcony / Internet (Extra Charge) / Penalty Fee for Early Cancellation / Musical Instrument Negotiable / CS/CATV / Flooring / Bathroom dryer / WIC		

Building Information			
Completion	Feb, 2009	Earthquake Resistance	New
Structure	RC, 8 floors above		
Car Parking	JPY25,000 ~ 39,000 + tax / month		
Bicycle Parking	N/A		
Music Instrument	Negotiable	Pet	Allowed
Facilities	Front desk / Delivery box / Elevator / Security		

*The actual Layout & Size may differ slightly from this floor plans & pictures.



HOUSEREP TOKYO INC.

ハウスレップトーキョー株式会社

#301, 1-4-15, Hiroo, Shibuya-ku, Tokyo 150-0012, Japan

+81 (0)3 6427 5860

inquiry@housserrep-tokyo.com

Transaction Type : Intermediate

Agent Fee : 1 month + tax

Website : www.housserrep-tokyo.com



Remarks
Fixed term lease : Re-contract fee: 1 month of new rent / Internet subscription fee: 1,500yen+tax/month / Parking : 1 month for deposit / Pet:additional deposit (1 month) / Pet : a small dog or a cat