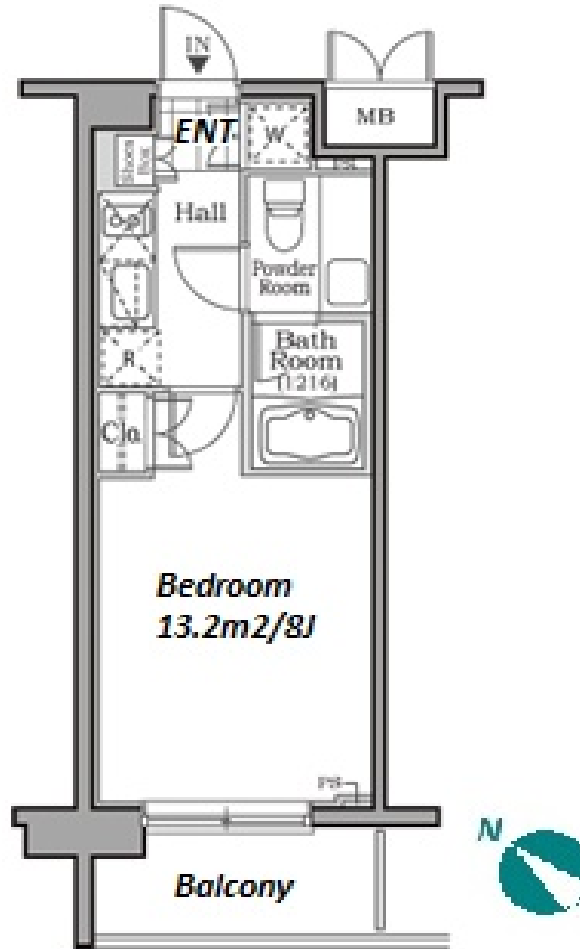
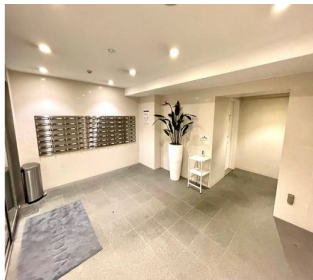
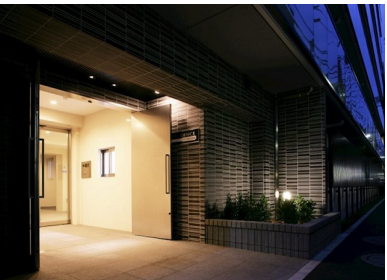


Property Name	RESIDIA YOGA	Unit No.	TYPE	Access	Youga Station on Denentoshi Line (2 min) Sakurashinmachi Station on Denentoshi Line (17 min)
		204	Apt.		
Address	2-32-8, Yoga, Setagaya-Ku, Tokyo				



*The actual Layout & Size may differ slightly from this floor plans & pictures.

Lease Conditions		
LAYOUT	Studio	
SIZE	25.06 m²/269.74 ft²	
RENT	JPY 109,000 / month	
Management Fee	JPY10,000/month	
Deposit	2 months	Key Money -
Lease Term	Standard lease for 24 months	
Available	End, Oct, 2024	
Renewal Fee	1 month	
Agent Fee	1 month + tax	
Other Info	Key Replacement Fee : JPY20,000 Tax not included / Guarantor Company : TBC / No Key Money / Auto lock / Air-Con / Separated Toilet / Balcony / Internet (Extra Charge) / Penalty Fee for Early Cancellation / CS/CATV / Flooring / Bathroom dryer	

Building Information			
Completion	Jun, 2008	Earthquake Resistance	New
Structure	RC, 6 floors above		
Car Parking	-		
Bicycle Parking	-		
Music Instrument	-	Pet	Allowed
Facilities	Delivery box / Elevator / Security / Close to Station		

Remarks
Renters Insurance : Required / Tenant support fee: JPY.10,000+tax/2years Internet fee: JPY.2,000+tax/month / Pet:additional deposit (1 month) / Pet : a small dog or a cat



HOUSEREP TOKYO INC.

ハウズレップトーキョー株式会社

#301, 1-4-15, Hiroo, Shibuya-ku, Tokyo 150-0012, Japan

+81 (0)3 6427 5860

inquiry@housserrep-tokyo.com

Transaction Type : Intermediate

Agent Fee : 1 month + tax

Website : www.housserrep-tokyo.com

