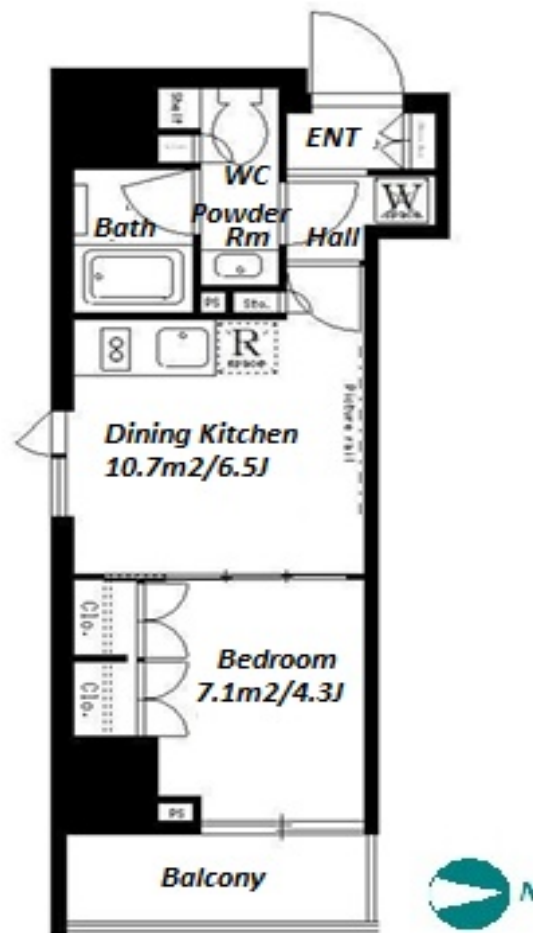


Property Name	LEFOND PROGRES BUNKYO	Unit No.	TYPE	Access	Yushima Station on Chiyoda Line (3 min) Okachimachi Station on JR Yamanote Line (9 min)
	YUSHIMA	604	Apt.		
Address	3-12-13, Yushima, Bunkyo-Ku, Tokyo				

Stylish pet friendly Apt. near "Yushima Tenjin Shrine" and "Ueno Park"



Lease Conditions		
LAYOUT	1 BR	
SIZE	29.48 m ² /317.32 ft ²	
RENT	JPY 156,000 / month	
Management Fee	JPY10,000/month	
Deposit	2 months	Key Money 1 month
Lease Term	Standard lease for 24 months	
Available	End, Nov, 2024	
Renewal Fee	1 month	
Agent Fee	1 month + tax	
Other Info	Key Replacement Fee : JPY20,000 Tax not included / Guarantor Company : TBC / Auto lock / Air-Con / Separated Toilet / Balcony / Internet Included / Flooring / Bathroom dryer	

Building Information		
Completion	Sep, 2020	Earthquake Resistance New
Structure	RC, 14 floors above	
Car Parking	TBC	
Bicycle Parking	(Included)	
Music Instrument	-	Pet Allowed
Facilities	Motorcycle Parking (JPY3,000 + tax / month) / Within 20 min to Tokyo station by car / Near Large Parks / Janitor / Delivery box / Elevator	

Remarks
Renters Insurance : Required / Bicycle parking : Registration sticker fee: JPY.2,000+tax / Pet:additional deposit (1 month) / Pet : a small dog or a cat



HOUSEREP TOKYO INC.

ハウスレップトーキョー株式会社

#301, 1-4-15, Hiroo, Shibuya-ku, Tokyo 150-0012, Japan

+81 (0)3 6427 5860

inquiry@housserrep-tokyo.com

*The actual Layout & Size may differ slightly from this floor plans & pictures.

Transaction Type : Intermediate

Agent Fee : 1 month + tax

Website : www.housserrep-tokyo.com

