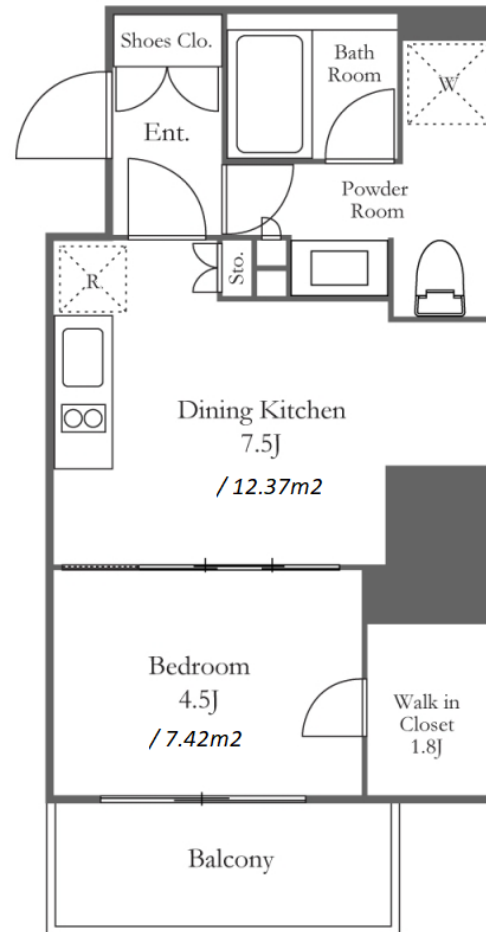


Property Name	THE PARK ONES SHIBUYA	Unit No.	TYPE	Access	Nishishinjukugochoume Station on Oedo Line (6 min) Hatsudai Station on Keio Line (11 min) Nakanosakaue Station on Marunouchi Line (14 min)
	HONMACHI	910	Apt.		
Address	3-49-17, Hommachi, Shibuya-Ku, Tokyo				

Modern Mid Rise Apt. near Shinjuku Ch?? Park



Lease Conditions		
LAYOUT	1 BR	
SIZE	33.29 m ² /358.33 ft ²	
RENT	JPY 158,000 / month	
Management Fee	JPY10,000/month	
Deposit	2 months	Key Money 1 month
Lease Term	Standard lease for 24 months	
Available	Early, Oct, 2024	
Renewal Fee	1 month	
Agent Fee	1 month + tax	
Other Info	Guarantor Company : TBC / Auto lock / Air-Con / Separated Toilet / Balcony / Flooring / Bathroom dryer / WIC	

Building Information		
Completion	Nov, 2018	Earthquake Resistance New
Structure	RC, 14 floors above	
Car Parking	TBC	
Bicycle Parking	TBC	
Music Instrument	-	Pet -
Facilities	Motorcycle Parking (TBC) / Near Large Parks / Delivery box / Elevator / 24h Garbage Drop-off / Newly-built (~7 y/o)	

*The actual Layout & Size may differ slightly from this floor plans & pictures.



HOUSEREP TOKYO INC.

ハウスレップトーキョー株式会社

#301, 1-4-15, Hiroo, Shibuya-ku, Tokyo 150-0012, Japan

+81 (0)3 6427 5860

inquiry@housserrep-tokyo.com

Transaction Type : Intermediate

Agent Fee : 1 month + tax

Website : www.housserrep-tokyo.com



Remarks
Renters Insurance : Required