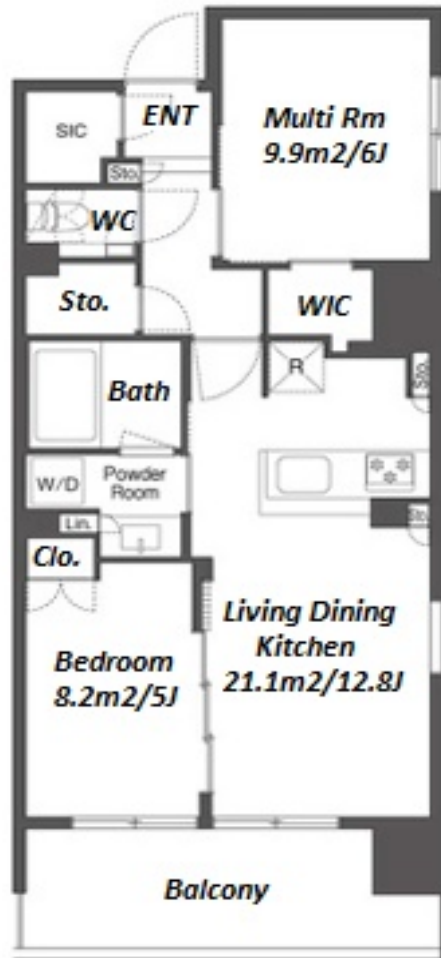
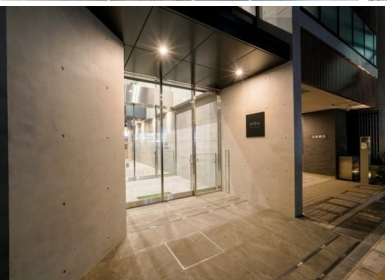


Property Name	MIRYA RESIDENCE NIHOMBASHI NINGYOCHO	Unit No.	TYPE	Access	Suitennguumae Station on Hanzomon Line (3 min)
		509	Apt.		Suitennguumae Station on Hibiya Line (3 min) Ninngyouchou Station on Hibiya Line (5 min) Ninngyouchou Station on Hanzomon Line (5 min)
Address	2-35-15, Nihombashinginyocho, Chuo-Ku, Tokyo				

## Modern Mid Rise Apt. in a Lively Local Neighborhood of Nihombashi Ningyocho



\*The actual Layout & Size may differ slightly from this floor plans & pictures.

Lease Conditions	
LAYOUT	1 BR+S
SIZE	57.42 m <sup>2</sup> /618.06 ft <sup>2</sup>
RENT	JPY 383,000 / month
Management Fee	JPY20,000/month
Deposit	2 months <b>Key Money</b> -
Lease Term	Standard lease for 24 months
Available	Now
Renewal Fee	1 month
Agent Fee	1 month + tax
Other Info	Guarantor Company : TBC / No Key Money / Auto lock / Air-Con / Separated Toilet / Balcony / Penalty Fee for Early Cancellation / Flooring / Floor Heating / Dishwasher / Bathroom dryer / WIC

Building Information			
Completion	Jan, 2024	Earthquake Resistance	New
Structure	RC, 13 floors above		
Car Parking	extra charge		
Bicycle Parking	( Included )		
Music Instrument	-	Pet	Negotiable
Facilities	Delivery box / 24h Garbage Drop-off / Newly-built (~1 y/o)		

Remarks
Renters Insurance : Required



# HOUSEREP TOKYO INC.

ハウスレップトーキョー株式会社

#301, 1-4-15, Hiroo, Shibuya-ku, Tokyo 150-0012, Japan

+81 (0)3 6427 5860

inquiry@housserrep-tokyo.com

Transaction Type : Intermediate

Agent Fee : 1 month + tax

Website : www.housserrep-tokyo.com

