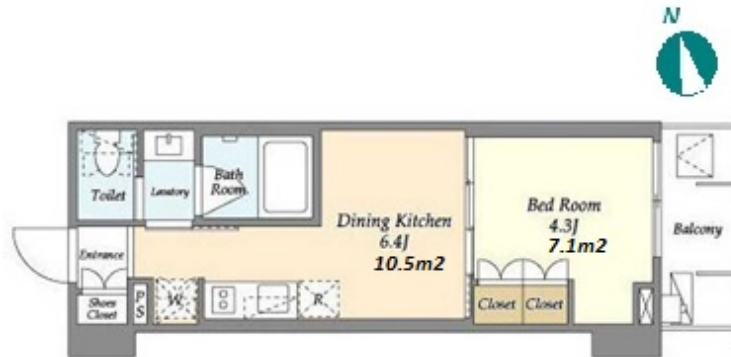


Property Name	GIOENT ASAKUSA KAMINARIMON	Unit No.	TYPE	Access	Asakusa Station on Ginza Line (4 min) Asakusa Station on Toei Asakusa Line (4 min) Tawaramachi Station on Ginza Line (6 min)
		802	Apt.		
Address	1-2-10, Kaminarimon, Taito-Ku, Tokyo				

Stylish Mid Rise Apt in a Historical Neighborhood of Asakusa



Lease Conditions	
LAYOUT	1 BR
SIZE	25.5 m ² /274.47 ft ²
RENT	JPY 135,000 / month
Management Fee	JPY10,000/month
Deposit	2 months
Key Money	-
Lease Term	Standard lease for 24 months
Available	Now
Renewal Fee	1 month
Agent Fee	1 month + tax
Other Info	Key Replacement Fee : JPY30,000 Tax not included / Guarantor Company : TBC / No Key Money / Auto lock / Air-Con / Separated Toilet / Balcony / Internet Included / Penalty Fee for Early Cancellation / CS/CATV / Flooring / Bathroom dryer

Building Information			
Completion	Feb, 2023	Earthquake Resistance	New
Structure	RC, 11 floors above		
Car Parking	extra charge		
Bicycle Parking	(Included)		
Music Instrument	-	Pet	N/A
Facilities	Motorcycle Parking (extra charge) / Janitor / Delivery box / Elevator / Close to Station / 24h Garbage Drop-off / Newly-built (~1 y/o)		

*The actual Layout & Size may differ slightly from this floor plans & pictures.



HOUSEREP TOKYO INC.

ハウスレップトーキョー株式会社

#301, 1-4-15, Hiroo, Shibuya-ku, Tokyo 150-0012, Japan

+81 (0)3 6427 5860 inquiry@housserrep-tokyo.com

Transaction Type : Intermediate

Agent Fee : 1 month + tax

Website : www.housserrep-tokyo.com



Remarks
Renters Insurance : Required