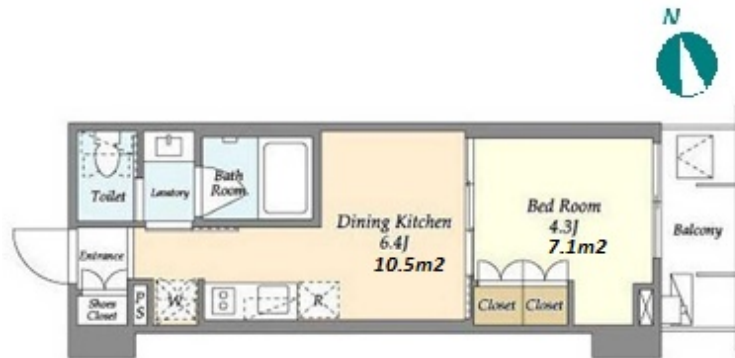


Property Name	GIOENT ASAKUSA KAMINARIMON	Unit No.	TYPE	Access	Asakusa Station on Ginza Line (4 min) Asakusa Station on Toei Asakusa Line (4 min) Tawaramachi Station on Ginza Line (6 min)
		302	Apt.		
Address	1-2-10, Kaminarimon, Taito-Ku, Tokyo				

Stylish Mid Rise Apt in a Historical Neighborhood of Asakusa



Lease Conditions

LAYOUT	1 BR		
SIZE	25.5 m ² /274.47 ft ²		
RENT	JPY 130,000 / month		
Management Fee	JPY 10,000/month		
Deposit	2 months	Key Money	-
Lease Term	Standard lease for 24 months		
Available	Now		
Renewal Fee	1 month		
Agent Fee	1 month + tax		
Other Info	Key Replacement Fee : JPY30,000 Tax not included / Guarantor Company : TBC / No Key Money / Auto lock / Air-Con / Separated Toilet / Balcony / Internet Included / Penalty Fee for Early Cancellation / CS/CATV / Flooring / Bathroom dryer		

Building Information

Completion	Feb, 2023	Earthquake Resistance	New
Structure	RC, 11 floors above		
Car Parking	extra charge		
Bicycle Parking	(Included)		
Music Instrument	-	Pet	N/A
Facilities	Motorcycle Parking (extra charge) / Janitor / Delivery box / Elevator / Close to Station / 24h Garbage Drop-off / Newly-built (~1 y/o)		

Remarks

Renters Insurance : Required

*The actual Layout & Size may differ slightly from this floor plans & pictures.



HOUSEREP TOKYO INC.

ハウスレップトーキョー株式会社

#301, 1-4-15, Hiroo, Shibuya-ku, Tokyo 150-0012, Japan

+81 (0)3 6427 5860 inquiry@housserrep-tokyo.com

Transaction Type : Intermediate

Agent Fee : 1 month + tax

Website : www.housserrep-tokyo.com

