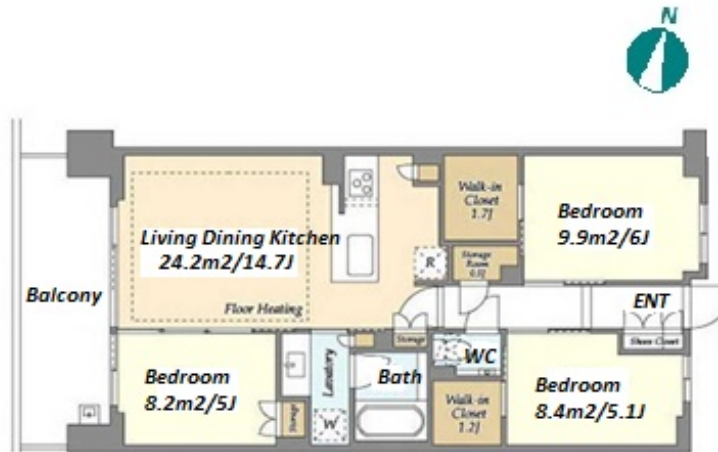


|               |                                    |          |      |        |  |
|---------------|------------------------------------|----------|------|--------|--|
| Property Name | DUE MACHIYA                        | Unit No. | TYPE | Access | Machiya Station on Chiyoda Line (10 min) |
|               |                                    | 403      | Apt. |        |  |
| Address       | 8-12-1, Machiya, Arakawa-Ku, Tokyo |          |      |        |  |



## Lease Conditions

|                |   |           |         |
|----------------|---|-----------|---------|
| LAYOUT         | 2 BR+S  |           |         |
| SIZE           | 70.63 m²/760.25 ft²   |           |         |
| RENT           | JPY 229,000 / month   |           |         |
| Management Fee | JPY15,000/month   |           |         |
| Deposit        | 1 month   | Key Money | 1 month |
| Lease Term     | Standard lease for 24 months  |           |         |
| Available      | Now   |           |         |
| Renewal Fee    | 1 month   |           |         |
| Agent Fee      | 1 month + tax   |           |         |
| Other Info     | Auto lock / Air-Con / Separated Toilet / Balcony / Internet Included / Penalty Fee for Early Cancellation / No Smoking / Flooring / Floor Heating / Dishwasher / Bathroom dryer / WIC |           |         |

## Building Information

|                  |  |                       |            |
|------------------|--|-----------------------|------------|
| Completion       | Jan, 2024  | Earthquake Resistance | New        |
| Structure        | RC, 8 floors above   |                       |            |
| Car Parking      | JPY23,500 + tax / month  |                       |            |
| Bicycle Parking  | ( Included )   |                       |            |
| Music Instrument | -  | Pet                   | Negotiable |
| Facilities       | Motorcycle Parking (JPY3,000 + tax / month) / Janitor / Delivery box / Elevator / Security / 24h Garbage Drop-off / Newly-built (~1 y/o) |                       |            |

## Remarks

Renters Insurance : Required / Room Cleaning: JPY 68,800+tax (when moving out) / AC Cleaning: JPY20,000+tax (when moving out)

\*The actual Layout & Size may differ slightly from this floor plans & pictures.



HOUSEREP TOKYO INC.

ハウスレップトーキョー株式会社

#301, 1-4-15, Hiroo, Shibuya-ku, Tokyo 150-0012, Japan

+81 (0)3 6427 5860

inquiry@housserrep-tokyo.com

Transaction Type : Intermediate

Agent Fee : 1 month + tax

Website : www.housserrep-tokyo.com

