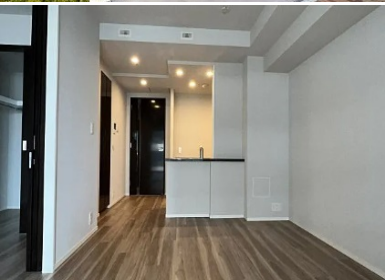
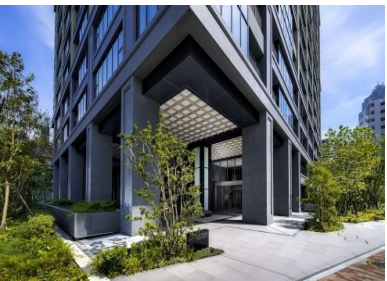


Property Name	CITY TOWER GINZAHIGASHI	Unit No.	TYPE	Access	Hacchoubori Station on Hibiya Line (5 min)
		13F	Apt.		
Address	2-11-1, Minato, Chuo-Ku, Tokyo				



Lease Conditions			
LAYOUT	2 BR		
SIZE	64.49 m ² /694.16 ft ²		
RENT	JPY 365,000 / month		
Management Fee	-		
Deposit	2 months	Key Money	1 month
Lease Term	Standard lease for 24 months		
Available	Mid, Sep, 2024		
Renewal Fee	1 month		
Agent Fee	1 month + tax		
Other Info	Guarantor Company : TBC / Auto lock / Air-Con / Separated Toilet / Balcony / Penalty Fee for Early Cancellation / Flooring / Dishwasher / Bathroom dryer / WIC		

Building Information			
Completion	Jan, 2019	Earthquake Resistance	New
Structure	RC, 22 floors above and 1 basement floors		
Car Parking	N/A		
Bicycle Parking	N/A		
Music Instrument	-	Pet	N/A
Facilities	Delivery box / Elevator / Security / Close to Station / 24h Garbage Drop-off / High-rise / Newly-built (~7 y/o)		

Remarks
Renters Insurance : Required

*The actual Layout & Size may differ slightly from this floor plans & pictures.



HOUSEREP TOKYO INC.

ハウスレップトーキョー株式会社

#301, 1-4-15, Hiroo, Shibuya-ku, Tokyo 150-0012, Japan

+81 (0)3 6427 5860

inquiry@housserrep-tokyo.com

Transaction Type : Intermediate

Agent Fee : 1 month + tax

Website : www.housserrep-tokyo.com

