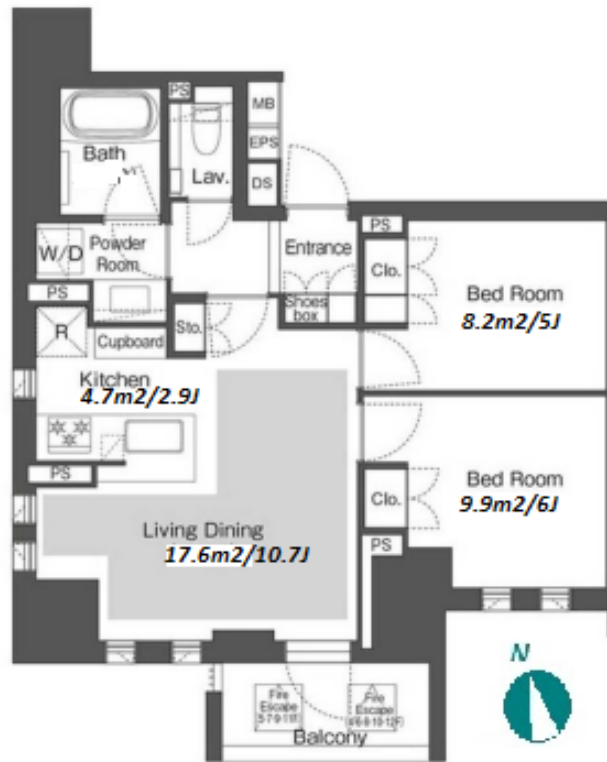


Property Name	BELLE VUE CHIYODA IIDABASHI	Unit No.	TYPE	Access	Iidabashi Station on Tozai Line (4 min) Iidabashi Station on JR Chuo-Sobu Line (6 min)
		901	Apt.		
Address	1-12-4, Iidabashi, Chiyoda-Ku, Tokyo				

## New Middle Rise Apt. in Iidabashi



## Lease Conditions

LAYOUT	2 BR		
SIZE	56.14 m²/604.28 ft²		
RENT	JPY 333,000 / month		
Management Fee	JPY15,000/month		
Deposit	2 months	Key Money	1 month
Lease Term	Standard lease for 24 months		
Available	Now		
Renewal Fee	1 month		
Agent Fee	1 month + tax		
Other Info	Key Replacement Fee : JPY25,000 Tax not included / Guarantor Company : TBC / Auto lock / Air-Con / Separated Toilet / Balcony / Internet Included / Penalty Fee for Early Cancellation / Flooring / Floor Heating / Dishwasher / Bathroom dryer / Corner Unit		

## Building Information

Completion	Jul, 2021	Earthquake Resistance	New
Structure	RC, 12 floors above		
Car Parking	-		
Bicycle Parking	extra charge		
Music Instrument	-	Pet	N/A
Facilities	Motorcycle Parking (extra charge) / Trunk Room (extra charge) / Within 20 min to Tokyo station by car / Janitor / Delivery box / Elevator / Security / Close to Station / Newly-built (~7 y/o)		

## Remarks

Renters Insurance : Required

\*The actual Layout &amp; Size may differ slightly from this floor plans &amp; pictures.



HOUSEREP TOKYO INC.

ハウズレップトーキョー株式会社

#301, 1-4-15, Hiroo, Shibuya-ku, Tokyo 150-0012, Japan

+81 (0)3 6427 5860

inquiry@housserrep-tokyo.com

Transaction Type : Intermediate

Agent Fee : 1 month + tax

Website : www.housserrep-tokyo.com

