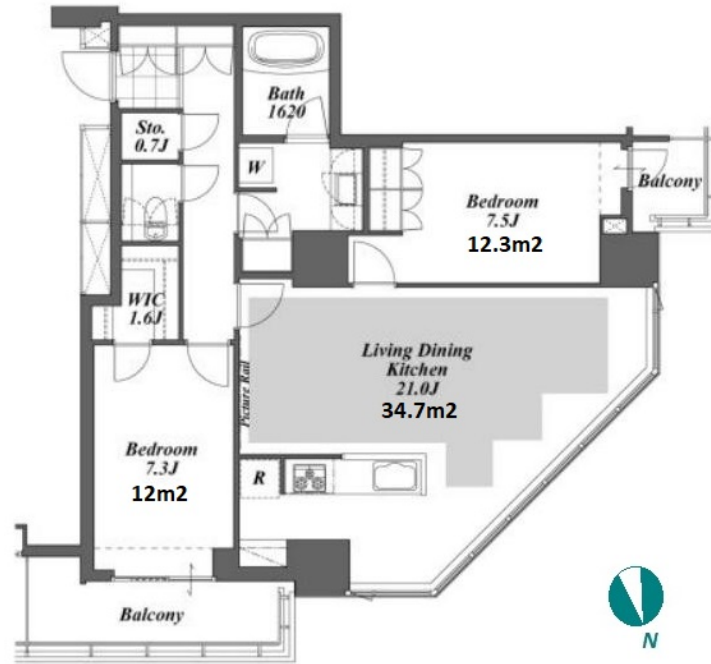


|               |                                  |          |      |        |  |
|---------------|----------------------------------|----------|------|--------|--|
| Property Name | BRILLIA IST TOWER KACHIDOKI      | Unit No. | TYPE | Access | Kachidoki Station on Oedo Line (3 min)<br>Tsukishima Station on Yurakucho Line (10 min)<br>Tsukiji Station on Hibiya Line (12 min) |
|               |                                  | 3901     | Apt. |        |  |
| Address       | 1-3-1, Kachidoki, Chuo-Ku, Tokyo |          |      |        |  |



| Lease Conditions |  |
|------------------|--|
| LAYOUT           | 2 BR   |
| SIZE             | 84.82 m <sup>2</sup> /912.99 ft <sup>2</sup>   |
| RENT             | JPY 400,000 / month  |
| Management Fee   | JPY 18,000/month   |
| Deposit          | 2 months   |
| Key Money        | 1 month  |
| Lease Term       | Fixed term lease for 24 months   |
| Available        | Now  |
| Renewal Fee      | -  |
| Agent Fee        | 1 month + tax  |
| Other Info       | Key Replacement Fee : JPY 15,000 Tax not included / Guarantor Company : TBC / Auto lock / Air-Con / Separated Toilet / Balcony / Internet Included / Penalty Fee for Early Cancellation / Nice Views / Flooring / Floor Heating / Bathroom dryer |

| Building Information  |   |
|-----------------------|---|
| Completion            | Oct, 2011   |
| Earthquake Resistance | New   |
| Structure             | RC, 45 floors above and 2 basement floors   |
| Car Parking           | -   |
| Bicycle Parking       | extra charge  |
| Music Instrument      | -   |
| Pet                   | -   |
| Facilities            | Gym (( Included )) / Front desk / Concierge / Delivery box / Elevator / Security / Close to Station / Fitness / Gym / High-rise |

\*The actual Layout & Size may differ slightly from this floor plans & pictures.



HOUSEREP TOKYO INC.

ハウズレップトーキョー株式会社

#301, 1-4-15, Hiroo, Shibuya-ku, Tokyo 150-0012, Japan

+81 (0)3 6427 5860

inquiry@housserrep-tokyo.com

Transaction Type : Intermediate

Agent Fee : 1 month + tax

Website : www.housserrep-tokyo.com



| Remarks                      |
|------------------------------|
| Renters Insurance : Required |