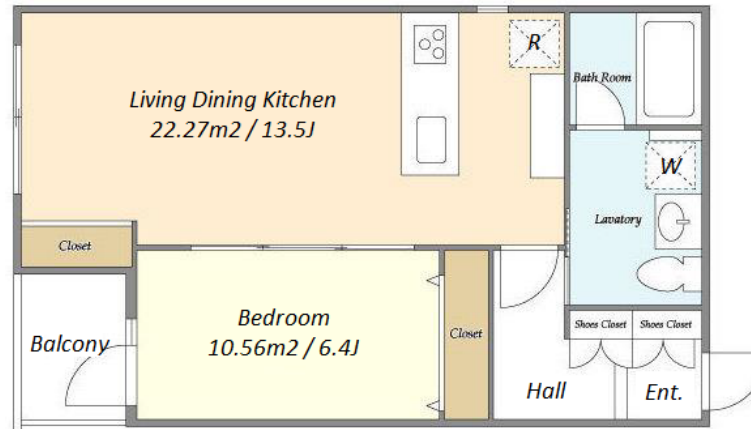


Property Name	CUORE NAKAMEGURO	Unit No.	TYPE	Access	Nakameguro Station on Toyoko Line (6 min)
		202	Apt.		
Address	3-3-4, Nakameguro, Meguro-Ku, Tokyo				

New Low Rise Apt. in Nakameguro



Lease Conditions			
LAYOUT	1 BR		
SIZE	50.23 m²/540.67 ft²		
RENT	JPY 260,000 / month		
Management Fee	JPY 10,000/month		
Deposit	2 months	Key Money	1 month
Lease Term	Standard lease for 24 months		
Available	End, Oct, 2024		
Renewal Fee	1 month		
Agent Fee	1 month + tax		
Other Info	Key Replacement Fee : JPY40,000 Tax not included / Guarantor Company : TBC / Auto lock / Air-Con / Separated Toilet / Balcony / Penalty Fee for Early Cancellation / Flooring / IH Stoves / Bathroom dryer / Corner Unit		

Building Information			
Completion	Mar, 2020	Earthquake Resistance	New
Structure	SRC, 5 floors above		
Car Parking	N/A		
Bicycle Parking	N/A		
Music Instrument	-	Pet	N/A
Facilities	Delivery box / Elevator		

Remarks
Renters Insurance : Required

*The actual Layout & Size may differ slightly from this floor plans & pictures.



HOUSEREP TOKYO INC.

ハウスレップトーキョー株式会社

#301, 1-4-15, Hiroo, Shibuya-ku, Tokyo 150-0012, Japan

+81 (0)3 6427 5860 inquiry@housserrep-tokyo.com

Transaction Type : Intermediate

Agent Fee : 1 month + tax

Website : www.housserrep-tokyo.com

