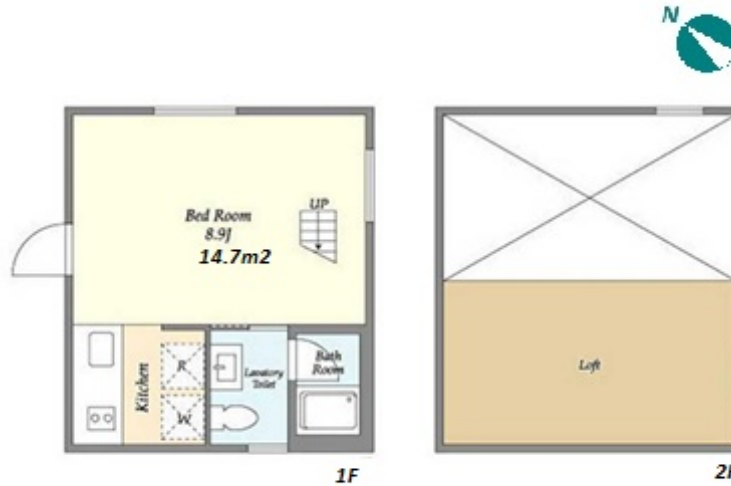


Property Name	JINGUMAE MANSION	Unit No.	TYPE	Access	Meijijinguumae harajuku Station on Chiyoda Line (8 min)
		111	Apt.		
Address	3-15-19, Jingumae, Shibuya-Ku, Tokyo				

Low rise apartment in TOKYO near Meiji-Jingumae Sta.



Lease Conditions	
LAYOUT	Studio
SIZE	22.41 m ² /241.21 ft ²
RENT	JPY 160,000 / month
Management Fee	JPY10,000/month
Deposit	2 months
Key Money	1 month
Lease Term	Standard lease for 24 months
Available	End, Sep, 2024
Renewal Fee	1 month
Agent Fee	1 month + tax
Other Info	Key Replacement Fee : JPY30,000 Tax not included / Guarantor Company : TBC / Auto lock / Air-Con / Separated Toilet / Loft/Maisonnette / Internet Included / Penalty Fee for Early Cancellation / IH Stoves / Bathroom dryer

Building Information	
Completion	Jan, 2024
Earthquake Resistance	New
Structure	RC, 3 floors above and 2 basement floors
Car Parking	-
Bicycle Parking	-
Music Instrument	-
Pet	N/A
Facilities	Delivery box / Elevator / Security / Low-rise / Newly-built (~1 y/o)

*The actual Layout & Size may differ slightly from this floor plans & pictures.



HOUSEREP TOKYO INC.

ハウスレップトーキョー株式会社

#301, 1-4-15, Hiroo, Shibuya-ku, Tokyo 150-0012, Japan

+81 (0)3 6427 5860

inquiry@housserrep-tokyo.com

Transaction Type : Intermediate

Agent Fee : 1 month + tax

Website : www.housserrep-tokyo.com



Remarks
Renters Insurance : Required