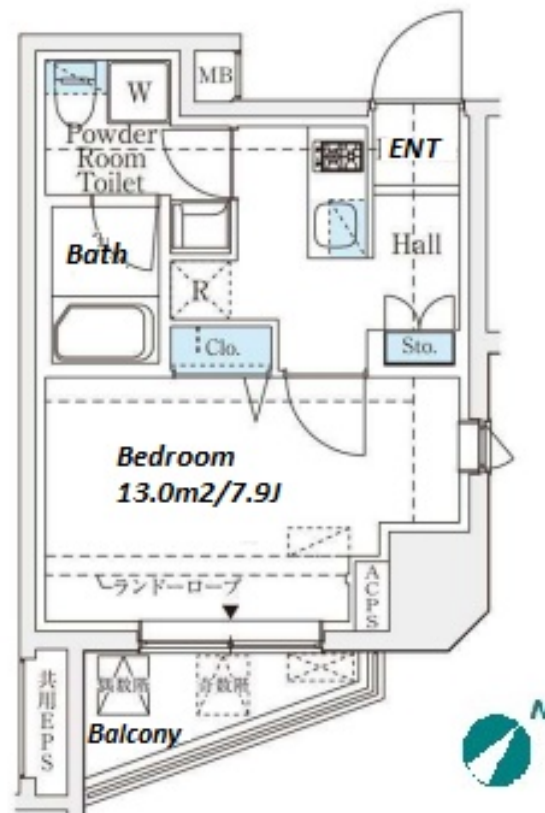
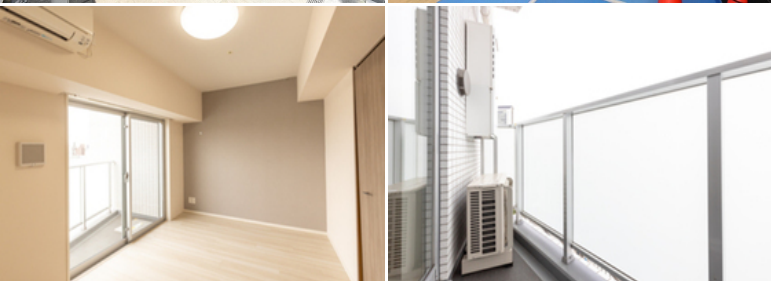
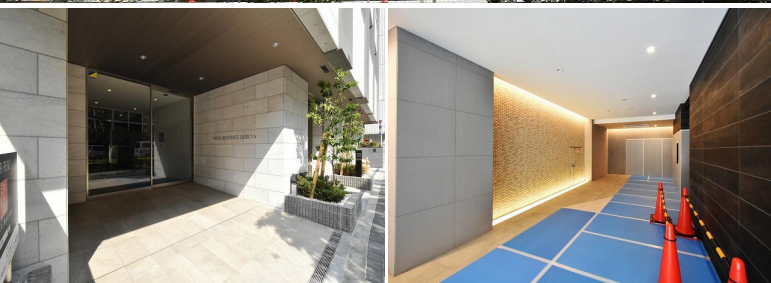


Property Name	PRIME RESIDENCE SHIBUYA	Unit No.	TYPE	Access	Shibuya Station on JR Yamanote Line (11 min) Ebisu Station on JR Yamanote Line (12 min)
		1101	Apt.		
Address	2-21-8, Higashi, Shibuya-Ku, Tokyo				



Lease Conditions	
LAYOUT	Studio
SIZE	26.57 m <sup>2</sup> /285.99 ft <sup>2</sup>
RENT	JPY 154,000 / month
Management Fee	JPY12,000/month
Deposit	1 month
Key Money	-
Lease Term	Standard lease for 24 months
Available	End, Oct, 2024
Renewal Fee	1 month
Agent Fee	1 month + tax
Other Info	Key Replacement Fee : JPY20,000 Tax not included / Guarantor Company : TBC / No Key Money / Auto lock / Air-Con / Separated Toilet / Balcony / Penalty Fee for Early Cancellation / Musical Instrument Negotiable / Flooring / Floor Heating / Bathroom dryer

Building Information			
Completion	May, 2017	Earthquake Resistance	New
Structure	RC, 15 floors above		
Car Parking	-		
Bicycle Parking	for 1 space ( Included )		
Music Instrument	Negotiable	Pet	-
Facilities	Motorcycle Parking (TBC) / Janitor / Delivery box / Elevator / High-rise / Newly-built (~7 y/o)		

Remarks
Renters Insurance : Required

\*The actual Layout & Size may differ slightly from this floor plans & pictures.



HOUSEREP TOKYO INC.

ハウズレップトーキョー株式会社

#301, 1-4-15, Hiroo, Shibuya-ku, Tokyo 150-0012, Japan

+81 (0)3 6427 5860

inquiry@housserrep-tokyo.com

Transaction Type : Intermediate

Agent Fee : 1 month + tax

Website : www.housserrep-tokyo.com

