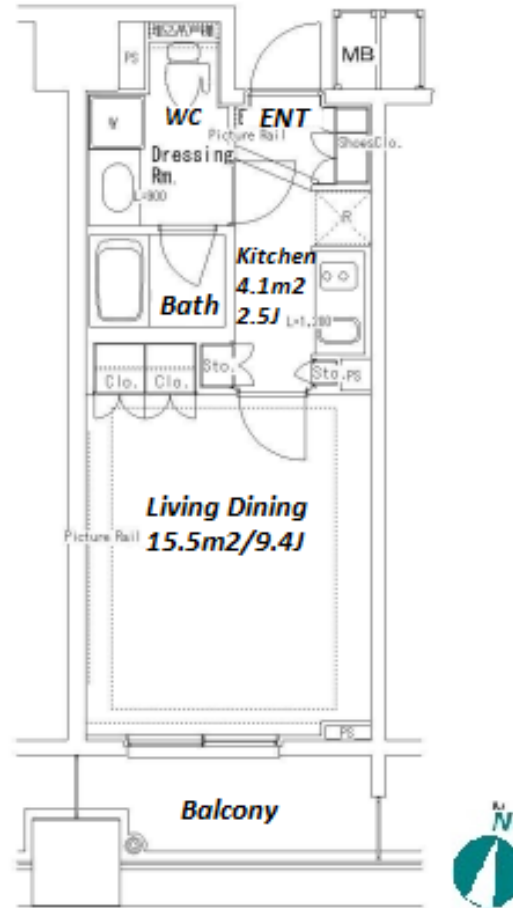
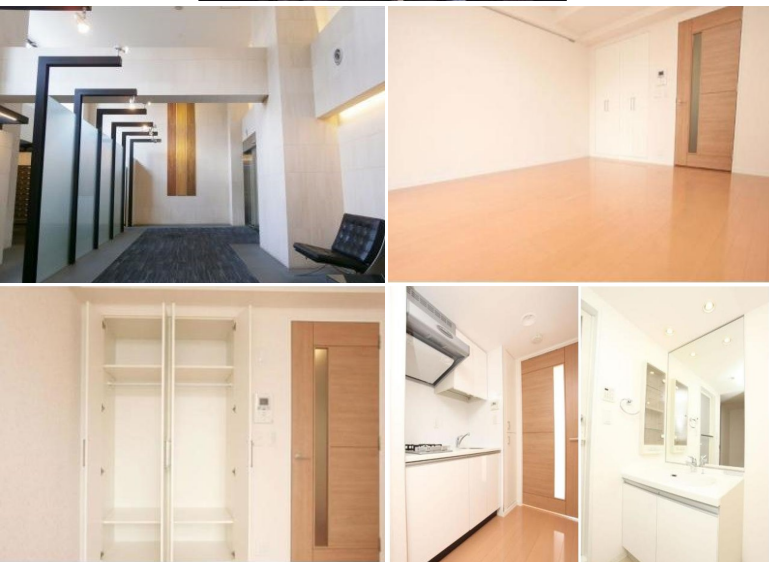


Property Name	PARK AXIS OCHANOMIZU STAGE	Unit No.	TYPE	Access	Suehirochou Station on Ginza Line (6 min) Yushima Station on Chiyoda Line (6 min) Ochanomizu Station on JR Chuo Line Rapid Service (8 min) Akihabara Station on JR Yamanote Line (13 min)
		202	Apt.		
Address	3-2-14, Yushima, Bunkyo-Ku, Tokyo				

Mid-rise Apt. in Ochanomizu, near Akihabara



Lease Conditions		
LAYOUT	Studio	
SIZE	29.7 m ² /319.68 ft ²	
RENT	JPY 128,000 / month	
Management Fee	JPY8,000/month	
Deposit	2 months	Key Money 1 month
Lease Term	Standard lease for 24 months	
Available	End, Sep, 2024	
Renewal Fee	1 month	
Agent Fee	1 month + tax	
Other Info	Key Replacement Fee : JPY15,000 Tax not included / Guarantor Company : TBC / Auto lock / Air-Con / Separated Toilet / Balcony / Penalty Fee for Early Cancellation / CS/CATV / Flooring / Floor Heating / Bathroom dryer	

Building Information			
Completion	Feb, 2006	Earthquake Resistance	New
Structure	RC, 14 floors above		
Car Parking	extra charge		
Bicycle Parking	for 1 space (Included)		
Music Instrument	-	Pet	Allowed
Facilities	Within 20 min to Tokyo station by car / Janitor / Delivery box / Elevator / Security		

Remarks	
Renters Insurance : Required / Bicycle parking : Registration fee: JPY.2,000+tax / Pet:additional deposit (1 month) / Pet : up to two small dogs/ No cat	

*The actual Layout & Size may differ slightly from this floor plans & pictures.



HOUSEREP TOKYO INC.

ハウスレップトーキョー株式会社

#301, 1-4-15, Hiroo, Shibuya-ku, Tokyo 150-0012, Japan

+81 (0)3 6427 5860

inquiry@housserrep-tokyo.com

Transaction Type : Intermediate

Agent Fee : 1 month + tax

Website : www.housserrep-tokyo.com

