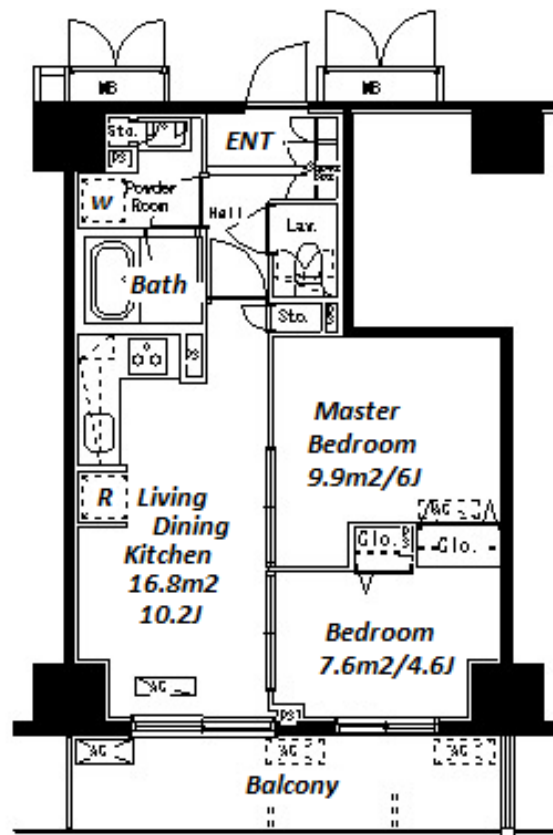


Property Name	PARK AXIS MOTOASAKUSA STAGE	Unit No.	TYPE	Access	Shinnokachimachi Station on Oedo Line (2 min) Inarichou Station on Ginza Line (8 min) Kuramae Station on Toei Asakusa Line (11 min)
		1604	Apt.		
Address	1-8-11, Motoasakusa, Taito-Ku, Tokyo				



## Lease Conditions

LAYOUT	2 BR		
SIZE	47.42 m²/510.42 ft²		
RENT	JPY 229,000 / month		
Management Fee	JPY15,000/month		
Deposit	2 months	Key Money	2 months
Lease Term	Standard lease for 24 months		
Available	End, Sep, 2024		
Renewal Fee	1 month		
Agent Fee	1 month + tax		
Other Info	Key Replacement Fee : JPY20,000 Tax not included / Guarantor Company : TBC / Auto lock / Air-Con / Separated Toilet / Balcony / Penalty Fee for Early Cancellation / Musical Instrument Negotiable / CS/CATV / Flooring / Bathroom dryer		

## Building Information

Completion	Apr, 2008	Earthquake Resistance	New
Structure	RC, 16 floors above and 1 basement floors		
Car Parking	extra charge		
Bicycle Parking	for 1 space ( Included )		
Music Instrument	Negotiable	Pet	Allowed
Facilities	Motorcycle Parking (TBC) / Delivery box / Elevator / Close to Station / High-rise		

## Remarks

Renters Insurance : Required / Pet:additional deposit ( 1 month ) / Pet : a small dog or up two cats

\*The actual Layout & Size may differ slightly from this floor plans & pictures.



HOUSEREP TOKYO INC.

ハウズレップトーキョー株式会社

#301, 1-4-15, Hiroo, Shibuya-ku, Tokyo 150-0012, Japan

+81 (0)3 6427 5860

inquiry@housserrep-tokyo.com

Transaction Type : Intermediate

Agent Fee : 1 month + tax

Website : www.housserrep-tokyo.com

