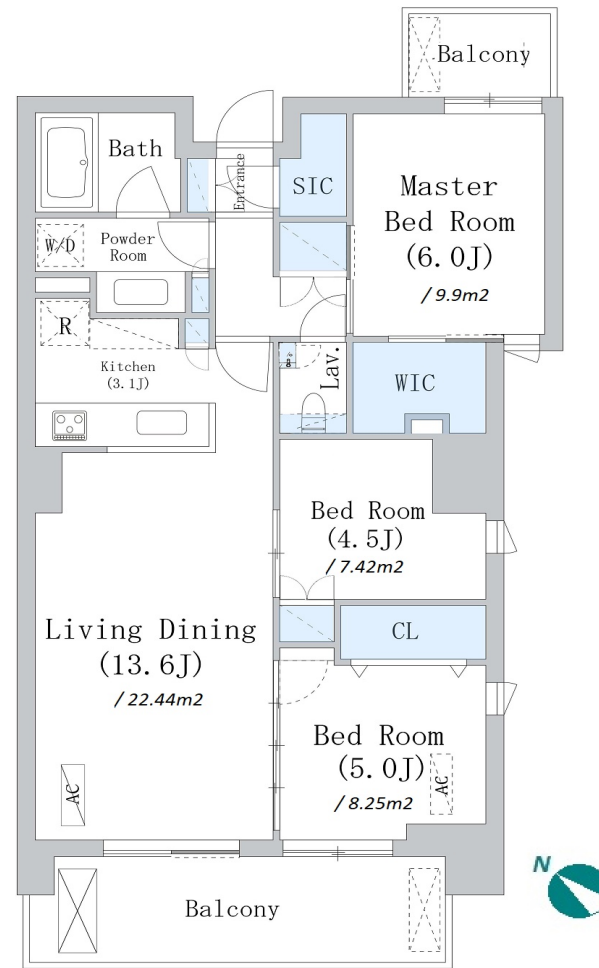


Property Name	PARK AXIS SENKAWA	Unit No.	TYPE	Access	Sennkawa Station on Yurakucho Line (6 min) Sennkawa Station on Fukutoshin Line (6 min)
		405	Apt.		
Address	2-33-12, Senkawa, Toshima-Ku, Tokyo				

Cosy Low Rise Apt. in Senkawa, Toshima-ku w/ Dog's Foot Wash Area



*The actual Layout & Size may differ slightly from this floor plans & pictures.

Lease Conditions	
LAYOUT	3 BR
SIZE	72.96 m ² /785.33 ft ²
RENT	JPY 279,000 / month
Management Fee	JPY20,000/month
Deposit	1 month
Key Money	2 months
Lease Term	Standard lease for 24 months
Available	Early, Aug, 2024
Renewal Fee	1 month
Agent Fee	1 month + tax
Other Info	Guarantor Company : TBC / Auto lock / Air-Con / Balcony / Internet Included / Flooring / Bathroom dryer / WIC / Corner Unit

Building Information	
Completion	Jul, 2024
Earthquake Resistance	New
Structure	RC, 6 floors above
Car Parking	TBC
Bicycle Parking	(Included)
Music Instrument	-
Pet	Allowed
Facilities	Motorcycle Parking (TBC) / Delivery box / Close to Station / 24h Garbage Drop-off / Newly-built (~1 y/o)

Remarks
Renters Insurance : Required / Pet:additional deposit (1 month) + depreciation fee (1 month)



HOUSEREP TOKYO INC.

ハウズレップトーキョー株式会社

#301, 1-4-15, Hiroo, Shibuya-ku, Tokyo 150-0012, Japan

+81 (0)3 6427 5860

inquiry@housserrep-tokyo.com

Transaction Type : Intermediate

Agent Fee : 1 month + tax

Website : www.housserrep-tokyo.com

