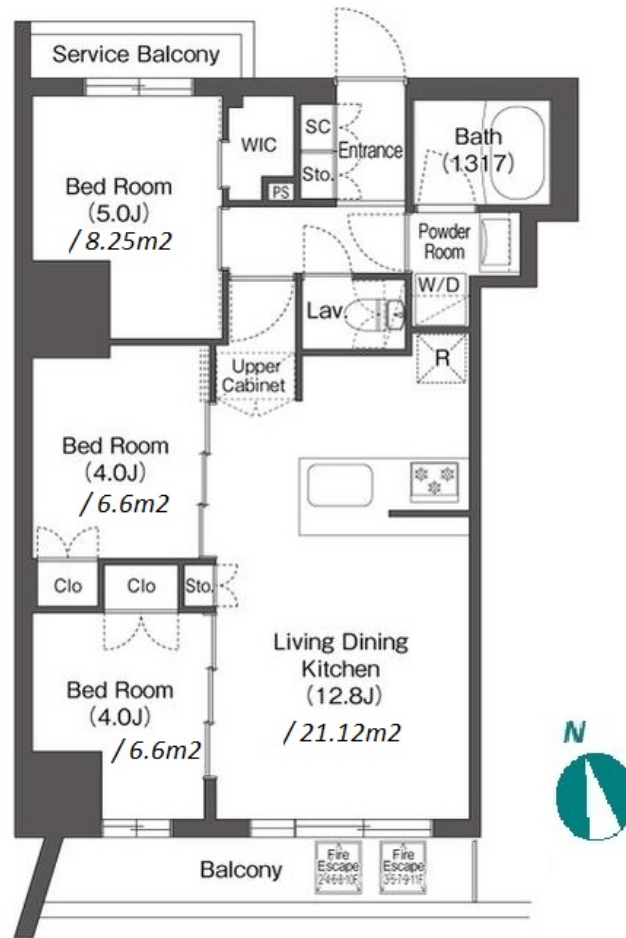
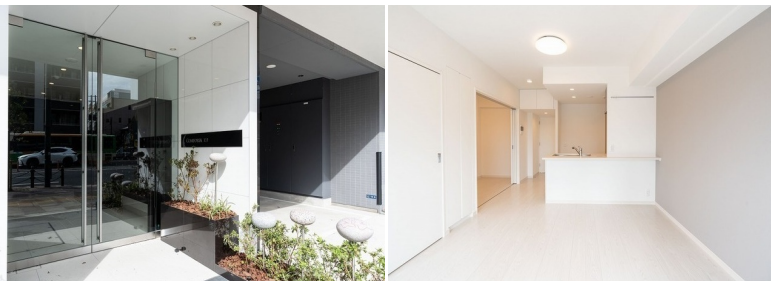


Property Name	COMFORIA OJI	Unit No.	TYPE	Access	Ouji Station on Namboku Line (3 min) Ouji Station on JR Keihin Tohoku Line (5 min) Ouji Station on Toden Arawaka Line (5 min)
		1001	Apt.		
Address	2-13-6, Oji, Kita-Ku, Tokyo				

Modern Mid Rise Apt. in "Oji" stn.



*The actual Layout & Size may differ slightly from this floor plans & pictures.

Lease Conditions	
LAYOUT	3 BR
SIZE	55.07 m²/592.76 ft²
RENT	JPY 255,000 / month
Management Fee	JPY 15,000/month
Deposit	1 month
Key Money	-
Lease Term	Standard lease for 24 months
Available	Now
Renewal Fee	1 month
Agent Fee	1 month + tax
Other Info	Guarantor Company : TBC / Auto lock / Air-Con / Separated Toilet / Balcony / Internet Included / Flooring / Bathroom dryer / WIC

Building Information			
Completion	Sep, 2023	Earthquake Resistance	New
Structure	RC, 11 floors above		
Car Parking	TBC		
Bicycle Parking	(Included)		
Music Instrument	-	Pet	Allowed
Facilities	Janitor / Delivery box / Elevator / Close to Station / 24h Garbage Drop-off / Newly-built (~1 y/o)		

Remarks
Renters Insurance : Required / Pet:additional deposit (1 month)



HOUSEREP TOKYO INC.

ハウスレップトーキョー株式会社

#301, 1-4-15, Hiroo, Shibuya-ku, Tokyo 150-0012, Japan

+81 (0)3 6427 5860

inquiry@housserrep-tokyo.com

Transaction Type : Intermediate

Agent Fee : 1 month + tax

Website : www.housserrep-tokyo.com

