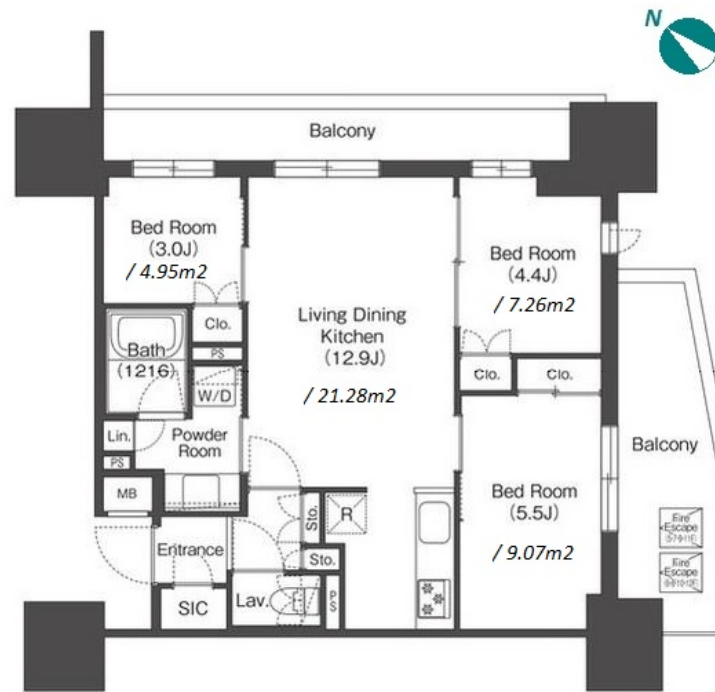


Property Name	COMFORIA LIV ITABASHI	Unit No.	TYPE	Access	Shinnitabashi Station on Mita Line (1 min) Itabashi Station on JR Saikyo Line (4 min)
		808	Apt.		
Address	1-51-5, Itabashi, Itabashi-Ku, Tokyo				

Modern Apt. Complex near "Shin-Itabashi" stn.



Lease Conditions	
LAYOUT	3 BR
SIZE	56.15 m <sup>2</sup> /604.39 ft <sup>2</sup>
RENT	JPY 250,000 / month
Management Fee	JPY15,000/month
Deposit	1 month
Key Money	-
Lease Term	Standard lease for 24 months
Available	Early, Oct, 2024
Renewal Fee	1 month
Agent Fee	1 month + tax
Other Info	Guarantor Company : TBC / No Key Money / Auto lock / Air-Con / Balcony / Internet Included / Penalty Fee for Early Cancellation / Flooring / Bathroom dryer / Corner Unit

Building Information			
Completion	Sep, 2024	Earthquake Resistance	New
Structure	RC, 14 floors above		
Car Parking	TBC		
Bicycle Parking	for 1 space ( Included )		
Music Instrument	-	Pet	Negotiable
Facilities	Motorcycle Parking (JPY6,000 + tax / month) / Janitor / Delivery box / Close to Station / 24h Garbage Drop-off / Newly-built (~1 y/o)		

Remarks
Renters Insurance : Required

\*The actual Layout & Size may differ slightly from this floor plans & pictures.



HOUSEREP TOKYO INC.

ハウスレップトーキョー株式会社

#301, 1-4-15, Hiroo, Shibuya-ku, Tokyo 150-0012, Japan

+81 (0)3 6427 5860

inquiry@housserrep-tokyo.com

Transaction Type : Intermediate

Agent Fee : 1 month + tax

Website : www.housserrep-tokyo.com

