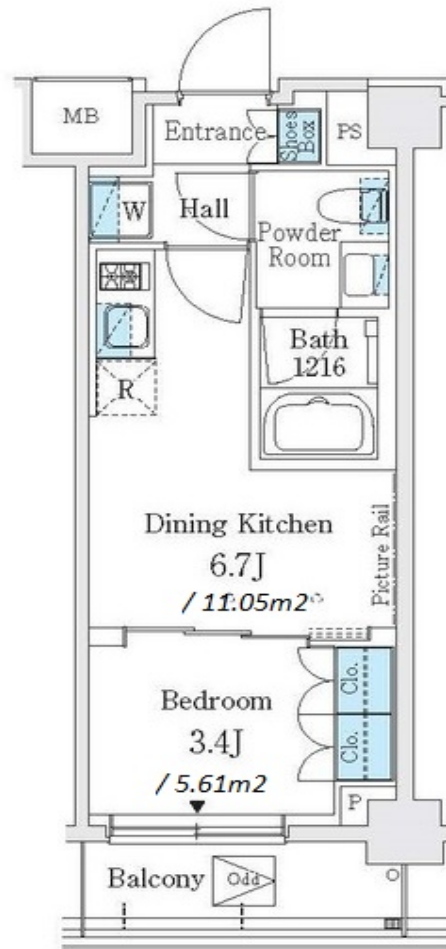
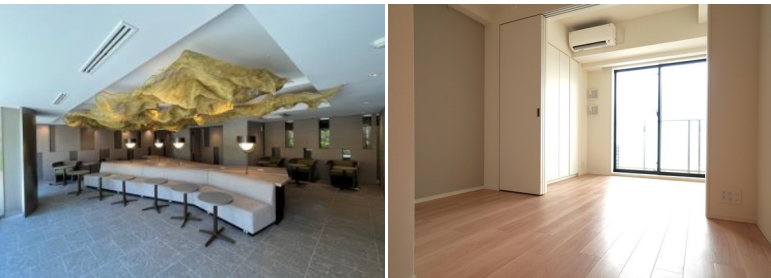


Property Name	J. GRAN COURT SHINAGAWA NISHIOOI WEST	Unit No.	TYPE	Access	Nishiooi Station on JR Yokosuka Line (7 min) Nishiooi Station on JR Shonan Shinjuku Line (7 min)
	Address	2-10-3, Nishioi, Shinagawa-Ku, Tokyo	209		

## Stylish Low Rise Apt. in Nishiooi



Lease Conditions		
LAYOUT	1 BR	
SIZE	27.17 m <sup>2</sup> /292.45 ft <sup>2</sup>	
RENT	JPY 135,000 / month	
Management Fee	JPY 15,000/month	
Deposit	1 month	Key Money -
Lease Term	Standard lease for 24 months	
Available	Now	
Renewal Fee	1 month	
Agent Fee	1 month + tax	
Other Info	Key Replacement Fee : JPY 15,000 Tax not included / Guarantor Company : TBC / Auto lock / Separated Toilet / Balcony / Internet Included / CS/CATV / Flooring / Bathroom dryer	

Building Information		
Completion	Aug, 2023	Earthquake Resistance New
Structure	RC, 5 floors above	
Car Parking	TBC	
Bicycle Parking	JPY 330/ month	
Music Instrument	-	Pet Negotiable
Facilities	Motorcycle Parking (TBC) / Delivery box / Elevator / 24h Garbage Drop-off / Low-rise / Newly-built (~1 y/o)	

\*The actual Layout & Size may differ slightly from this floor plans & pictures.



HOUSEREP TOKYO INC.

ハウズレップトーキョー株式会社

#301, 1-4-15, Hiroo, Shibuya-ku, Tokyo 150-0012, Japan

+81 (0)3 6427 5860

inquiry@housserrep-tokyo.com

Transaction Type : Intermediate

Agent Fee : 1 month + tax

Website : www.housserrep-tokyo.com



Remarks
Renters Insurance : Required