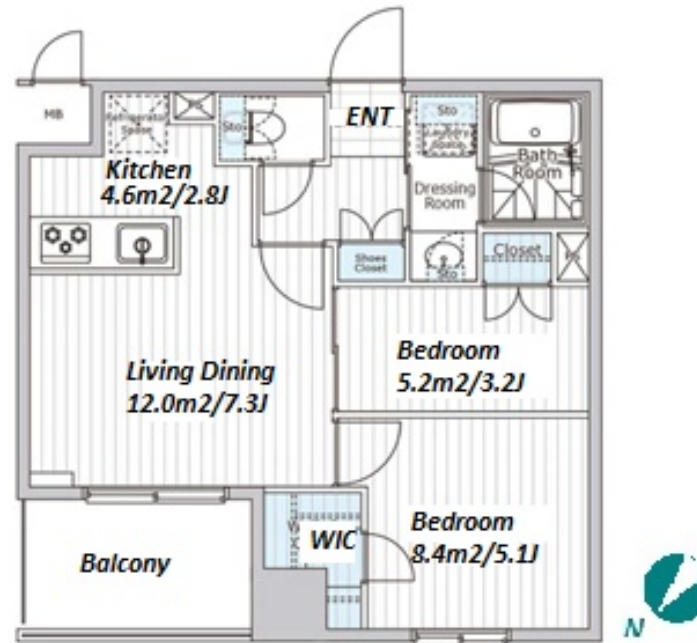


Property Name	VIERRA COURT NIHONBASHI HISAMATSU CHO	Unit No.	TYPE	Access	Ninngyouchou Station on Hibiya Line (5 min) Ninngyouchou Station on Hanzomon Line (5 min) Higashinohonbashi Station on Toei Asakusa Line (5 min)
	Address	6-2, Nihombashihisamatsucho, Chuo-Ku, Tokyo	1103		

Modern Mid Rise Apt. in Nihonbashi, near "Ningyocho" stn.



Lease Conditions		
LAYOUT	2 BR	
SIZE	43.23 m²/465.32 ft²	
RENT	JPY 275,000 / month	
Management Fee	JPY20,000/month	
Deposit	2 months	Key Money -
Lease Term	Standard lease for 24 months	
Available	Now	
Renewal Fee	1 month	
Agent Fee	1 month + tax	
Other Info	Guarantor Company : TBC / No Key Money / Auto lock / Air-Con / Separated Toilet / Balcony / Internet Included / Penalty Fee for Early Cancellation / Flooring / Bathroom dryer / WIC	

Building Information			
Completion	Mar, 2024	Earthquake Resistance	New
Structure	RC, 11 floors above		
Car Parking	extra charge		
Bicycle Parking	for 1 space ( Included )		
Music Instrument	-	Pet	Allowed
Facilities	Within 20 min to Tokyo station by car / Janitor / Delivery box / Elevator / Close to Station / 24h Garbage Drop-off / Newly-built (~1 y/o)		

Remarks
Renters Insurance : Required / Pet:additional deposit ( 1 month ) / Pet : a small dog or a cat

\*The actual Layout & Size may differ slightly from this floor plans & pictures.



HOUSEREP TOKYO INC.

ハウスレップトーキョー株式会社

#301, 1-4-15, Hiroo, Shibuya-ku, Tokyo 150-0012, Japan

+81 (0)3 6427 5860

inquiry@housserrep-tokyo.com

Transaction Type : Intermediate

Agent Fee : 1 month + tax

Website : www.housserrep-tokyo.com

